

T 11 N

R 2 W



Office of the Monroe County Surveyor
Trohn Enright-Randolph

Health Services Building
119 West 7th Street
Bloomington, IN 47404
Phone: (812) 349-2570

Dear User,

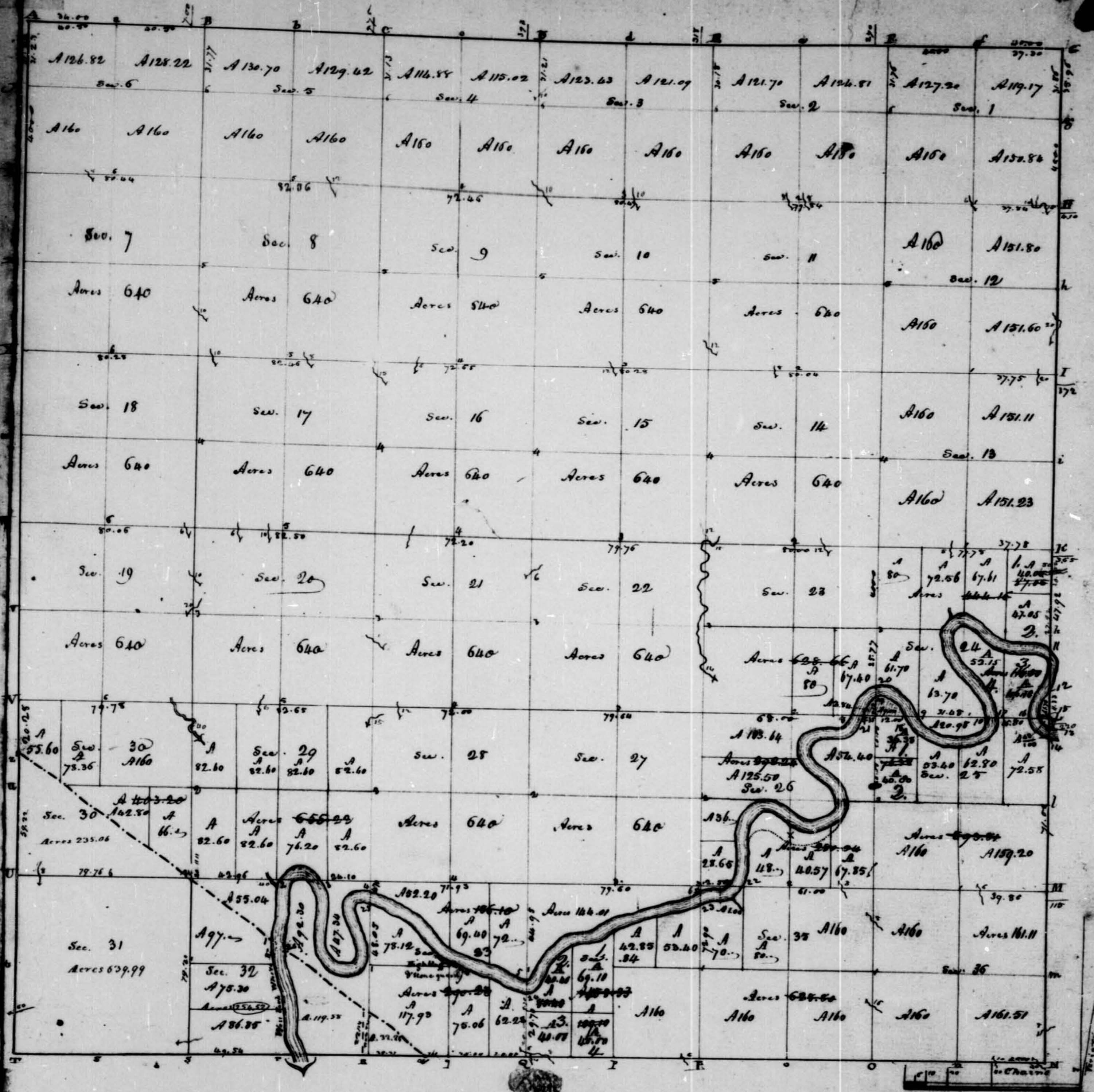
The following images were obtained in 2017 by the Office of the Monroe County Surveyor from the State Imaging and Microfilm Laboratory at the Indiana State Archives. The field notes and plats for Owen County are stored on microfilm Reel 4659 at the Indiana State Archives. Each page provided by the State Imaging and Microfilm Laboratory is approximately 18MB. Our office combined the pages by Township & Range and reduced the resulting pdfs. This process may have caused some degradation in quality. We will provide unreduced images of specific pages if required. Please contact us at 812-349-2570 or at SurveyorsOffice@co.monroe.in.us to request a higher quality image of any specific page.

The pdfs are bookmarked with the original page numbers as assigned by the State Imaging and Microfilm Laboratory.

Be prepared to provide the county name, reel number, and the required page numbers when requesting full sized images.

If you would like a DVD of an entire county, please provide us with one DVD per county along with a self-addressed, stamped envelope.

Trohn Enright-Randolph
Monroe County Surveyor



Township N. II North, Range N. II West of the 2nd Meridian. Surveyed by W. Harris 1816 & Thos. Brown 1816

Description of the Soil in the interior Sectional lines.

| Section | Quality &c. | Section | Quality &c. | Section | Quality &c. |
|---------|--|---------|---|---------|--|
| 31.22 | 2 nd rate Sugar. Spice &c. | 28.33 | 1 st & 2 nd rate Sugar. Last & 1 st rate level | 28.3 | 2 nd rate level |
| 30.33 | Same | 28.33 | 1 st rate level | 28.33 | 2 nd rate level |
| 29.28 | Same. 1 st rate level. 1 st rate level. Sugar. Walnut. Hick. | 27.28 | 1 st & 2 nd rate level | 26.35 | 2 nd rate level. Oak. Beech. & Hickory |
| 19.30 | 2 nd rate level. Sugar. Beech. & Hickory. Walnut. Hick. | 21.28 | 2 nd & 3 rd rate level. Oak. | 25.36 | 2 nd & 3 rd rate level. Same |
| 18.30 | Same | 21.22 | 1 st & 2 nd rate level. Last & 2 nd rate level. Oak. | 23.26 | 1 st & 2 nd rate level. Oak. Beech. & Hickory. Walnut. Hick. |
| 17.30 | Same | 16.21 | 2 nd & 3 rd rate level. Oak. | 22.26 | 1 st & 2 nd rate level. Walnut. Hickory. Beech. & Hickory. Pine. |
| 16.30 | Same | 15.16 | Same. Oak. Beech. Sugar. Poplar &c. | 21.25 | 1 st & 2 nd rate level |
| 15.30 | Same | 14.16 | Same | 20.26 | 1 st & 2 nd rate level |
| 14.30 | Same | 13.16 | Same | 19.26 | 1 st & 2 nd rate level |
| 13.30 | Same | 12.16 | Same | 18.26 | 1 st & 2 nd rate level |
| 12.30 | Same | 11.16 | Same | 17.26 | 1 st & 2 nd rate level |
| 11.30 | Same | 10.16 | Same | 16.26 | 1 st & 2 nd rate level |
| 10.30 | Same | 9.16 | Same | 15.26 | 1 st & 2 nd rate level |
| 9.30 | Same | 8.16 | Same | 14.26 | 1 st & 2 nd rate level |
| 8.30 | Same | 7.16 | Same | 13.26 | 1 st & 2 nd rate level |
| 7.30 | Same | 6.16 | Same | 12.26 | 1 st & 2 nd rate level |
| 6.30 | Same | 5.16 | Same | 11.26 | 1 st & 2 nd rate level |
| 5.30 | Same | 4.16 | Same | 10.26 | 1 st & 2 nd rate level |
| 4.30 | Same | 3.16 | Same | 9.26 | 1 st & 2 nd rate level |
| 3.30 | Same | 2.16 | Same | 8.26 | 1 st & 2 nd rate level |
| 2.30 | Same | 1.16 | Same | 7.26 | 1 st & 2 nd rate level |
| 1.30 | Same | 0.16 | Same | 6.26 | 1 st & 2 nd rate level |

Sunday.

Next Quaternary line between Jan 1836. 3rd 10 11. 12. 13. 14.

7 3 4 4 4 Onk Smith Bonn W. J. 36.
J. H. N. 27.

3.00 To Abrah 30 hrs mid, Leona & W.

22.50 To a Brook 10 $\frac{1}{2}$ mi., Leomen. N

40.00 Set a tempo 74 ea post.

80,000 " " paid for the en of aut. 35136.
Sends the same

Must On a Reservation On the Death Room as per. 35.
J. H. N. D. W.

40,00 Dupa timpit 7^u la pmt.

80,000 Sets of timber in caput. In the co of our 34 x 40.
Land is nothing rich and good for farming
Timber Birch, Sugar, Poplar, Ash & Mahogany.

Saturday May 21. 1819

Meet On a Random Line On the South Boundary of sec 34
T. 11. N. R. 20. W.

8,00 Trap Brook. 6 miles north, Geo. N.W.

40.00 Let a temp. 17th en post.

70.00 Iron Brook 8 books, mktg. Co. N.Y.

79.00 " " Lev. 4 " " " N.N.

80,00 Set a trumpet post for the car gear 33 734
Sand. East for same. Must be rather Broken.
Lumber same, not sold.

West Quakam arm line On the South B.M. of sec. 33.
J. H. R. 2/11.

40.00 Set, a timp. 7¹¹ cu punct.

47. To 1 Fall 1185 W^g S. of the old bar on the N 93D of Harris's Purchase, between S^s 1112.

T. N. H. N. R. N. 27 2nd Mm. Ind.

Lands similar East part Rattle Brook.

East On the line On the South B⁷ of sec. 33.
T. N. H. N. R. N. 27 2nd Mm. Ind.

2.00 To spring Branch Co. N.E.

761. Set a post on the line from which
Beck 18 in dia. line. N 87 W 38 p. 1/2 m. dist. to
Loc. 18 " " S 24 W 26 " "4761 Set the temporary post on the line from the corner of sec. 33 & 34
from which Beck 6 in dia. line. N 65 W 19 p. 1/2 m. dist.
under Loc. 10 " " N 4 E 29 p. 1/2 m.East On a line between sec. 34 & 35 T. N. H. N. R. N. 27 2nd Mm. Ind." " " " On the South B⁷ of sec. 34.T. N. H. N. R. N. 27 2nd Mm. Ind.40.00 Set the temporary post on the line from which
Beck 27 in dia. line. S 36 W 33 p. 1/2 m. dist. to
Sugar 10 " " N 31 E 27 " "80.00 Set the temporary post at the corner of the line from which
Oak 30 in dia. line. N 72 W 16 p. 1/2 m. dist. to
Poplar 36 " " S 85 E 29 " "East On the line On the South B⁷ of sec. 35.
T. N. H. N. R. N. 27 2nd Mm. Ind.

8.00 To Beaver 10 p. 1/2 m. dist. N.E.

40.00 Set a post on the line from which
Beck 19 in dia. line. S 32 E 21 p. 1/2 m. dist. to
Loc. 8 " " N 70 W 18 " "80.00 Set a post for the corner of sec. 35 & 36 On the line from
from which Beck 14 in dia. line. N 39 W 28 p. 1/2 m. dist.
under Loc. 10 " " S 82 E 31 " "East On the line On the South B⁷ of sec. 36.T. N. H. N. R. N. 27 2nd Mm. Ind.T. N. H. N. R. N. 27 2nd Mm. Ind.40.00 Set the temporary post just at the line from which
18 in dia. line. N 85 W 19 p. 1/2 m. dist. to
Nick 9 " " S 69 E 27 " "80.00 Set out the Range 489 feet North of the temporary
6 mile post and set a post for the corner of sec.
1.6. 31 & 36 T. N. H. N. R. N. 27 2nd Mm. Ind. from which
Beck 12 in dia. line. S 76 E 25 p. 1/2 m. dist. to
Loc. 12 " " S 59 W 55 " "

Survey by W. Harris 1885.

East From the corner of T. N. H. N. R. N. 27 2nd Mm. Ind. On the
South B⁷ of sec. 31. T. N. H. N. R. N. 27 2nd Mm. Ind.40.00 Set a post from which
Walnut 20 in dia. line. S 62 E 21 p. 1/2 m. dist. to
Hackberry 14 " " N 41 W 47 " "80.00 Set a post for the corner of sec. 31 & 32 from which
Sugar 12 in dia. line. S 62 E 19 p. 1/2 m. dist. to
Walnut 16 " " N 69 W 27 " "

Lands river bottom.

East On the South B⁷ of sec. 32. T. N. H. N. R. N. 27 2nd Mm. Ind.40.00 Set a post from which
Hackberry 14 in dia. line. S 61 W 17 p. 1/2 m. dist. to
Oak 6 " " S 49 E 41 " "49.54 To the Right Bank of N. River the River was
high and ran no farther.Survey by
William Harris.
Sept. 17 1885.East On the South B⁷ of sec. 32. T. N. H. N. R. N. 27 2nd Mm. Ind.

40.00 To the old post

49.54 To the River at Lyeann. 18 in dia. cor.

T. N. 11. S. R. 2. W. 3rd Mer. Ind.

W. Oak 30. in diam. bears S. 77 E. 1. link dist
Land rich. Timber. Walnut. Buck. & Sugar.

North On the East Boundary of Sec. 25. T. 11. S. R. 3. W.
40. 00 Set a post for the cor. of $\frac{1}{4}$ Sec. from which a
Sugar 14 in diam. bears S. 81. E. 40. links dist. & a
Sugar 16. " " " S. 86. W. 12. " "

59. 22 Intersect the Boundary line from which a
Buck 14 in diam. bears S. 34. W. 40. links dist. & a
No. 20. " " " S. 53. E. 30. " "

North On the East Boundary of Sec. 25. T. 11. S. R. 3. W.
20. 28 Made the cor. of Sec. 2 & 25. on a Sugar 14 in diam.
Land rich & good for farming.

North On the East Boundary of Sec. 24. T. 11. S. R. 3. W.
40. 00 Set a post for the cor. of $\frac{1}{4}$ Sec. from which a
Buck 6 in diam. bears S. 73. E. 14. links dist. & a
No. 30. " " " S. 55. W. 33. " "

80. 00 Set a post for the cor. of Sec. 13 & 24. from which a
Sugar 11 in diam. bears S. 73. E. 17. links dist. and a
No. 30. " " " S. 2. W. 34. " "
Land rolling & rich; Timber Sugar Buck. Ash
Walnut Elm. &c.

North On the East Boundary of Sec. 23. T. 11. S. R. 3. W.
19. 00 To a Brook 12 links wide; course S.

40. 00 Set a post for the cor. of $\frac{1}{4}$ Sec. from which a
Buck in diam. bears S. 12. E. 13. links dist. & a
No. 12. " " " S. 65. E. 46. " "

80. 00 Set a post cor. of Sec. 12 & 13. from which a
Buck 27 in diam. bears S. 21. E. 30. links dist. & a
No. 15. " " " S. 4. E. 30. " "
Land same as in the last mile.

T. N. 11. S. R. 2. W. 3rd Mer. Ind.

North On the East Boundary of Sec. 12. T. 11. S. R. 3. W.
40. 00 Set a post for the cor. of $\frac{1}{4}$ Sec. from which a
Sugar 27 in diam. bears S. 31. E. 11. links dist. & a
W. Walnut 8 in " " " S. 6. W. 5. " "

73. 50 To a Small Brook, course East

80. 00 Set a post for the cor. of Sec. 1 & 12. from which a
Buck 20 in diam. bears S. 10. W. 25 links dist. & a
No. 27. " " " S. 2. E. 18. " "
Land & Timber same as in the last mile.

North On the East Boundary of Sec. 1. T. 11. S. R. 3. W.
40. 00 Set a post for the cor. of Sec. from which a
Buck 24 in diam. bears S. 33. E. 23. links dist. & a
No. 24. " " " S. 54. W. 10. " "

71 23 To the cor. of Towns 11 & 12. S. Ranges 2 & 3. W.
Land & Timber same as in the last mile.

South of Boundary surveyed in 1811 by Alex. Holmes
North " " " 1819 by Wm. Harris

Subdivisions

North Between Sec. 35 & 36. T. 11. S. R. 2. W.

18. 84 To a Buck 28 in diam. in the line

24. 00 To a Brook 16 links wide; course S. S. W.

40. 00 Set a post for the cor. of $\frac{1}{4}$ Sec. from which a
Sagwood 3 in diam. bears S. 35. W. 11. links dist. & a
Buck 4. " " " S. 65. E. 11. " "

60. 00 To a W. Oak 18 in diam. in the line

63. 08 To a Brook 8 links wide; course S. W.

80. 00 Set a post for the cor. of Sec. 25 & 26. 35 & 36. from which
a Buck 16 in diam. bears S. 30. E. 25. links dist. & a
No. 5. " " " S. 50. W. 5. " "
Land broken & 3rd rate. Timber W. Oak. B. Oak. Hickory
Buck &c. U. g. Sagwood. Summed. Sassafras. Birch &c.

80.00 To the post cor. of Sec. 11. 12. 13 & 14

North Between Sec. 10 & 11. T. 11. N. R. 2. W.

7.58 To a Brook 12 links wide; course S. E.

26.10 To a Oak 20 in dia. in the river.

40.00 Set a 7th sec post from whichSassafras 8 in dia. bears N 76° 19' W 9th dist; to
Hogwood 6th " " S 37° 6' 10' " "

53.28 To a Beech 19 in dia. in the river.

80.00 Set a post for the cor. of sec. 2, 3, 10 & 11 from which
Beech 26 in dia. bears N 81° 6' 17' W 1st dist; to

No. 7 " " S 63° 17' 25' "

Found post lost and post broken 2nd & 3rd rate

Timber Oak, Black Oak, Beech, Poplar, Hickory

Sugar, &c. W. Spruce Sassafras Birch &c.

West On all main line between Sec. 2 & 11 T. 11. N. R. 2. W.

37.50 To a Brook 8 links wide, course S. E.

40.00 Set a temporary 7th sec post

45.57 To a Brook 8 links wide, course S. E.

79.84 Intersect the N. R. line 68 links South of the post cor. of
Sec. 2, 3, 10 & 11.Found post lost & post broken 2nd & 3rd rate;

Timber Beech, Sugar, Oak, Black, Hickory &c.

W. Spruce, Hogwood, Sassafras, Hickory Birch &c.

East On the line between Sec. 2 & 11 T. 11. N. R. 2. W.

15.84 To a S. P. Hickory 20 in dia. in the river.

39.92 Set the temporary 7th sec post at the cor. on the river linefrom which, Oak 6 in dia. bears N 62° 17' 5th dist

and a Sassafras 14 " " S 54° 17' 14' "

61.69 To a Black 36 in dia. in the river.

79.84 To the post cor. of sec. 1, 2, 11 & 12.

Arch Between Sec. 2 & 3 T. 11. N. R. 2. W.

24.64 To a Poplar 14 in dia. in the river.

40.00 Set a 7th sec post from whichBeech 18 in dia. bears N 64° 17' 14' W 1st dist; to
Sugar 20 " " S 78° 6' 29' "

64.35 To the Ash 22 in dia. in the river.

70.18 Intersect the N. R. boundary 318 links East of the
post cor. of sec. 3 & 35 T. 12. N. R. 2. W. & set a post for
the " " 2nd 3rd from whichBeech 10 in dia. bears S 83° 17' 23' W 1st dist; to

No. 19 " " S 28° 6' 19' "

Found post and 2nd rate; Timber Poplar, Oak, &c.
W. Spruce, &c. Nov. 26. 1819.

North Between Sec. 33 & 34 T. 11. N. R. 2. W.

3.06 To a Brook 6 links wide, course N. W.

20.87 " an Ash 14 in dia. in the river.

29.70 Set a post on the Left Bank of N. River for the
cor. of sec. 33 & 34 from whichPoplar 12 in dia. bears S 61° 17' 3' W 1st dist; to

Red Birch 4 " " S 29° 6' 9' "

35.03 Set a post on the Right Bank of N. River for
the cor. of sec. 33 & 34 from whichOycanow 16 in dia. bears N 61° 17' 11' W 1st dist; to

Mulberry 6 " " S 35° 6' 21' "

40.00 Set a 7th sec post from whichHackberry 26 in dia. bears N 43° 17' 10' W 1st dist; to

Sugar 14 " " S 19° 6' 8' "

58.12 To a Locust 24 in dia. in the river.

80.00 Set a post for the cor. of sec. 27, 28, 33 & 34 from which

Hackberry 16 in dia. bears N 17° 6' 27' W 1st dist; to

Hickory 12 " " S 21° 17' 25' "

Found post & mile broken 3rd rate; Timber Oak, &c.

Beech, Hickory &c. Last 7 mile land 1st rate;
 Timber Walnut, Hackberry, Sugar, Buckeye, Hickory
 &c. W. Spruce, Hickory, Pawpaw &c. &c.

West On a Random line between Sec. 27 & 34 T. 11. N. R. 27. W.

40.00 Set a temporary post.

79.60 Intersect the N. 13 line 15 miles North of the post on
 of Sec. 27, 28, 33 & 34

Land land 1st rate; Timber Walnut, Hackberry, Sugar,
 Buckeye &c. W. Spruce & Pawpaw.

East On the line between Sec. 27 & 34 T. 11. N. R. 27. W.

26.03 To a Hackberry 14 in dia. in the line

39.80 Set the temporary post at the av. dist. in the line from
 from which a Buckeye 13 in dia. has 128 ft. 4 in. dist.
 and a Hackberry 14 " " " N. 1 E. 15 "

57.75 To a Hackberry 22 in dia. in the line.

79.60 To the cor. of sec. 26, 27, 34 & 35.

North Between Sec. 27 & 28 T. 11. N. R. 27. W.

20.97 To a Beech 16 in dia. in the line.

40.00 Set a temporary post from which,

North has 4 in dia. has N. 65 W. 13 miles dist; &c.,

Beech 18 " " " N. 42 E. 18 " "

68.18 To a Hackberry 24 in dia. in the line

80.00 Set a post for the cor. of sec. 21, 22, 27 & 28 from which,

Hickory 16 in dia. has. N. 10 W. 10 miles dist; &c.,

Maple 18 " " " S. 7 E. 12 " "

Land land part 1st & part 2nd rate; Timber Beech,
 Sugar, Oak, Walnut, Elm, Maple, Hackberry, &c.
 W. Spruce, Pawpaw and Birches &c.

West On a Random line between Sec. 22 & 27 T. 11. N. R. 27. W.

40.00 Set a temporary post.

79.64 Intersect the N. 13 line at the post cor. of sec. 21, 22, 27
 & 28. Land part land 1st rate; Timber 134 ft. Wal-
 nut, Beech, Ash, Cherry, Locust &c. W. Spruce, &c.

East On the line between Sec. 22 & 27 T. 11. N. R. 27. W.

21.50 To a Cherry 24 in dia. in the line.

39.82 Set a temporary post at the av. dist. in the line from
 which, Walnut 3 in dia. has. N. 49 W. 21. 0.6 dist; &c.,
 Sugar 25 " " " S. 47 E. 29 " "

57.54 To a Sugar 6 in dia. in the line.

79.64 To the post cor. of sec. 22, 23, 26 & 27.

North Between Sec. 21 & 22 T. 11. N. R. 27. W.

30.60 To a Walnut 14 in dia. in the line.

40.00 Set a temporary post from which,
 Beech 18 in dia. has. N. 49 W. 11 miles dist; &c.,
 W. Oak 10 " " " S. 55 E. 26 " "

63.65 To a Beech 8 miles mid. to sec. 27. W.

64.80 To a Hickory 16 in dia. in the line

80.00 Set a post for the cor. of sec. 15, 16, 21 & 22 from which,
 Hickory 10 in dia. has. N. 23 W. 7. 0.6 dist; &c.,

Beech 14 " " " S. 8 E. 18 " "

Land 1st & 2nd mile land 1st rate; 2nd & 3rd mile broken.
 3rd rate; Timber Walnut, Hackberry, Sugar, Beech,
 W. Oak, Hickory &c. W. Spruce, Maple, Dogwood
 Birches &c.

West Between Sec. 15 & 22 T. 11. N. R. 27. W. On a Random.

0.210 To a Beech 12 miles mid. to.

40.00 Set a temporary post.

79.76 Intersect the N. 13 line 27 miles North of the post cor.
 of sec. 15, 16, 21 & 22.

T. N. N. R. N. D. M. D. M. Ind.

- 20.29 To a Hick 16 in dia: in the line.
40.00 Set a 7/20 post from which,
Bech. 14 in dia: has N 13 E. 18 lbs dist; Pa,
Ho. 16 " " " S 15 W 30 " "
66.50 To a Red Oak 20 in dia: in the line.
72.06 To a Brook 15 limbs mid, corner N. W. W.
80.00 Set a post for the cor of sec. 20. 21. 28 & 29 from which,
Hick 13 in dia: has S 26 W. 11 lbs dist; Pa,
Ash. 18 " " " N 34 E. 14 " "
Sand line ends 2nd rate; Timber N Oak, R. Oak,
Bech, Sugar, Ash, &c. N. J. Spruce, Maple, &c.
-
- West On a Random line between Sec. 21 & 28 T. N. N. R. D. M.
40.00 Set a 7/20 post
69.70 To a Brook. 12 limbs mid, corner S. E. W.
72.00 Intersect the West 727 or N 18 line 16 limbs North
of the post cor of sec. 20. 21. 28 & 29.
Sand part line ends part broken 2nd & 3rd rate
Timber N Oak, Ash, Bech, Walnut, Hick &c.
N. J. Spruce, Ash, Maple, Bruns &c.
-
- East On the true line between Sec. 21 & 28. T. N. N. R. D. M.
25.50 To a Bech. 16 in dia: in the line.
36.00 Set the 7/20 post at the cor dist in the true line
from which, Sugar, 4 in dia: has S 35 E. 5 lbs dist;
and a Bech. 17 " " " N 13 E. 21 " "
55.45 To a Hick 16 in dia: in the line.
72.00 To the cor of sec. 22. 21. 28 & 29.
-
- North Return Sec. 20 & 21. T. N. N. R. D. M.
23.65 To an Elm 20 in dia: in the line.
29.00 To a Brook 5 limbs mid, corner S. E. W.
40.00 Set a 7/20 post from which,

T. N. N. R. N. D. M. D. M. Ind. 417

- Sugar. 20 in dia: has N 59 W. 5 limbs dist; Pa,
Ho. 14 " " " S 16 E. 10 " "
60.14 To a Sugar. 24 in dia: in the line.
80.00 Set a post for the cor of sec. 16. 17. 20 & 21 from which,
Sugar. 16 in dia: has S 12 W. 14 limbs dist; Pa,
Ho. 20 " " " N 68 E. 16 " "
Sound Broken 2nd rate; Timber Bech, Sugar,
Ash, Walnut, &c. N. J. Spruce, &c.
-
- West On a Random line between Sec. 16 & 21. T. N. N. R. D. M.
40.00 Set a 7/20 post
62.15 To a Brook 10 limbs mid, corner S. E. W.
72.20 Intersect the N 15 line 15 limbs North of the post.
cor of sec. 16. 17. 20 & 21.
Sound broken 2nd & 3rd rate; Timber Bech, N Oak,
Hick, Walnut, &c. N. J. Spruce, Maple, Sassafras, Hophorn,
Ironwood, &c. Nov. 23. 1817.
-
- East On the true line between Sec. 16 & 21. T. N. N. R. D. M.
17.80 To a Walnut. 12 in dia: in the line.
36.10 Set the 7/20 post at the cor dist in the true line
from which, Bech 18 in dia: has S 81 W. 14 lbs dist;
and a Ho. 14 " " " N 35 W. 23 " "
49.56 To a Bech. 20 in dia: in the line.
72.20 To the cor of sec. 15. 16. 21 & 22.
-
- North Return Sec. 16 & 21. T. N. N. R. D. M.
19.48 To a Sugar. 20 in dia: in the line.
40.00 Set a 7/20 post from which,
Bech. 22 in dia: has N 31 W. 28 lbs dist; Pa,
Ho. 30 " " " S 67 E. 16 " "
61.85 To a Walnut. 14 in dia: in the line.
71.00 To a Brook. 15 limbs mid, corner S. E. W.

T. N. H. N. R. N. 277 2nd Mn. IndianaSugar, Nick's Br. N. G. Spire, Ash, Hick's (Barns) Br.
Nov. 22. 1819.

| | |
|-------|---|
| North | Return Dec. 31 1832 T. N. H. N. R. 277 |
| 7.00 | To a small spring branch, corner S. W. |
| 40.00 | Set a new post from which Hackberry 12 in diam. bears S. 21 W. 7 1/2 lbs dist. 10 Beech. 9 " " " N. 6 E. 10 " " |
| 79.20 | Set a post on the N. E. 1/4 of Harris's Purchase for the cor. of tract Dec. 31 1832 from which Sugar 12 in diam. bears S. 42 W. 23 links dist. 10 H. 12 " " " N. 5 E. 19 " " |
| | Land 2 nd rate soil good for farming; |
| North | Return Dec. 31 1832 T. N. H. N. R. 277 |
| | Extends from the N. E. 1/4 of Harris's Pur. |
| 79.20 | Originally Ann. |
| 80.00 | Set a post for the cor. of tr. 29. 30. 31. 1832 from which Beech 14 in diam. bears N. 61 E. 34 lbs dist. 10 Sugar 12 " " " N. 47 W. 22 " " |
| | Land 2 nd rate; Timber Sugar & Spire. |
| East | Return Dec. 31 1831 T. N. H. N. R. 277 |
| 12.50 | To a Brook 8 links mid. corner S. |
| 40.00 | Set a new post from which Sugar 12 in diam. bears S. 30 E. 9 links dist. S. a H. 12 " " " N. 37 W. 9 " " |
| 79.76 | Intersect the Boundary line and set a post cor. of Sec. 29. 30. 31 & 32. from which a Sugar 10 in diam. bears S. 29 W. 16 links dist. S. a H. 10 " " " N. 6 E. 17 " " |
| | Land rolling or rather broken, with sink holes Soil very rich. Timber. Beech. Sugar. Poplar. Walnut &c. All good Land for farming. |

T. N. H. N. R. N. 277 2nd Mn. Ind.West On a Random line between Sec. 30 & 31 T. N. H. N. R. 277
0.24 To intersect the N. E. 1/4 of Harris's Purchase.
Land 2nd rate.

| | |
|-------|---|
| West | On a Random line between Sec. 29 1832 T. N. H. N. R. 277 |
| 24.10 | To the Right Bank of W. River. |
| 29.05 | " " Left Bank " " " |
| 34.00 | " " " " " " " |
| 40.00 | Set the temporary new post. |
| 40.62 | To the N. W. or Right Bank of W. River. |
| 43.48 | To a Brook 41 links mid. corner S. E. |
| 82.58 | Enter at the N. E. line 39 links South of the post cor. of Dec. 29. 30. 31 1832 |
| | Land part wood and part broken. 2 nd rate, Timber Walnut, Hackberry, Buckeye, Lycamore, B. Alder, Sugar, Hick's Beech, H. N. G. Spire. &c. |

| | |
|-------|--|
| East | On the line between Sec. 29 1832 T. N. H. N. R. 277 |
| 23.74 | To a Sugar. 16 in diam. in the line. |
| 41.29 | Set the temporary post at the cor. dist. on the line from which a Elm. 8 in diam. bears N. 21 E. 36 lbs dist. 10 Box Elm. 4 " " " N. 37 W. 22 " " |
| 42.96 | Set a post on Right Bank of W. River for the cor. of tract Dec. 29 1832 from which Elm. 18 in diam. bears N. 22 E. 52 links dist. 10 H. 16 " " " N. 47 W. 64 " " |
| 48.58 | Set a post on the Left Bank of W. River for the cor. of tract Dec. 29 1832 from which Cottonwood 4 in diam. bears N. 50 E. 11 lbs dist. 10 H. 6 " " " S. 22 E. 12 " " |
| 53.53 | Set a post on the Left Bank of W. River for the cor. of tract Dec. 29 1832 from which Walnut. 6 in diam. bears N. 16 W. 9 links dist. 10 |

T. N. H. N. R. N. 2nd Mm. Ind.

- Ask 4 in diam. bears 124 E. 19 N. dist;
- 58.43 Set apart on the Right Bank of N River for the cor of
from Sec. 29 130 from which,
Walnut 20 in diam. bears S 83 E. 41 N. dist; or,
Loc. 20 " " " N 61 W 42 " "
- 82.58 To the corner 29 30 31 132.

- North Between Sec. 29 130. T. H. N. R. 2nd Mm.
- 19.06 To a Buck 18 in diam. in the river.
- 40.00 Set a 7/8 in post from which,
Elm. 5 in diam. bears N 69 W. 13 N. dist; or,
Oak 14 " " " N 72 E. 16 " "
- 60.54 To a Buck 17 in diam. in the river.
- 64.75 To a Buck 11 in diam. in the river.
- 69.00 Cut a Bend of river stream.
- 80.00 Set apart for the corner 19 20 29 130 from which,
Buck 24 in diam. bears N 20 E. 35 N. dist; or,
Elm. 30 " " " S 80 W 28 " "
- Scends part land and part broken 2nd rate land
Timber Sugar Walnut, Buck, Strick Ash, &c.
N. Y. Spruce, &c.

- West On a Random line between Sec. 20 & 29. T. H. N. R. 2nd Mm.
- 40.00 Set a temporary post.
- 51.51 To a Buck 6 in diam. in the river.
- 82.65 Intersect the N 13 line 10 links North of the post cor
of Sec. 19 20 29 130.
Land Broken of 2nd rate; Timber Buck, N Oak &
Sugar Ash &c. N. Y. Spruce, Ash &c.

- East On the True line between Sec. 20 & 29. T. H. N. R. 2nd Mm.
- 21.01 To a Buck 12 in diam. in the river.
- 41.32 Set the temporary 7/8 in post at the corner dist on the true line

Comp.

T. N. H. N. R. N. 2nd Mm. Ind.

- from which a Buck 18 in diam. bears S. 34 E. 15 links dist.
- 64.05 To a Buck 20 in diam. in the line
- 82.05 To the post cor. of Sec. 20 21 28 & 29.

- West On a Random line between Sec. 19 & 30. T. H. N. R. 2nd Mm.
- 7.35 To a Buck 35 links wide. Course S. E.
- 41.00 Set a temporary post for the cor. of 1/4 Sec.
- 79.78 Intersect the West Boundary 76 links S. of the post cor. of
Sec. 24 & 25. T. H. N. R. 3rd Mm.
- Land Broken & 2nd rate. Timber Sugar Locust Elm, Ash,
Buck, &c. Undugrowth Spruce &c.

- East On the True line between Sec. 19 & 30. T. H. N. R. 2nd Mm.
- 15.70 To a Sugar 18 in diam. in the line
- 39.89 Set the temporary post for the cor. of 1/4 Sec. at the corner dist. on
the true line. From which an
Ash 16 in diam. bears S 32 W. 9 N. dist; or,
Coffey 8 " " " N 45 W 25 " "
- 57.63 To a Sugar 8 in diam. in the river.
- 79.78 To the corner of Sec. 19 20 29 130.

- North Between Sec. 19 & 20. T. H. N. R. 2nd Mm.
- 21.78 To a Buck 18 in diam. in the river.
- 40.00 Set a 7/8 in post from which,
Sugar 8 in diam. bears N 34 W. 6 N. dist; or,
Walnut 12 " " " N 19 E. 11 " "
- 42.50 To a Buck 20 links wide. Course S. E.
- 57.50 " " 20 " " " " S. E.
- 57.90 To an Elm 14 in diam. in the river.
- 80.00 Set apart for the corner of Sec. 17 18 19 & 20 from which,
Buck 12 in diam. bears S 60 W 8 N. dist; or,
Sugar 14 " " " N 67 E. 10 " "
- Land Broken of 2nd rate; N. Y. Spruce & 13 links &

T. N. H. N. R. N. 272nd Mm. Ind.

Ash. 4 in diam. bears S 44 E. 17th Mm. dist;
 58.43 Set apart on the Right Bank of N River for the cor of
 Grad Sec. 29 130 from which
 Walnut 20 in diam. bears S 83 E. 41th Mm. dist; so,
 40. 20 " " " N 61 W 42 " "
 82.58 To the corner 29.30 31 130.

North Return Sec 29 130. T. N. H. N. 272nd Mm.
 19.06 To a Buck. 18 in diam. in the line.
 40.00 Set a 7th sec post from which,
 Elm. 5 in diam. bears N 69 W. 13 links east; so,
 Ash. 14 " " " N 72 E. 16 " "
 60.54 To a Buck 17 in diam. in the line.
 64.75 To a Buck 16 links wide, sec. 29.
 69.00 Cut a Bend of main Stream.
 80.00 Set apart for the corner 19.20.29. 130 from which,
 Buck 24 in diam. bears N 20 E. 35 links east; so,
 Elm. 30 " " " S 80 W 28 " "
 Land part but ends part broken 2nd rate land
 Timber Sugar Walnut, Buck, Stripes Ash, &c.
 N. of Spruce, &c.

West On a Random line between Sec. 20 & 29. T. N. H. N. 272nd Mm.
 40.00 Set a temp. 1st post.
 51.54 To a Buck 6 links wide, sec. 20 W.
 82.65. Intersect the N 13 line 10 links North of the post cor
 of Sec. 19.20 29 130.
 Land Broken of 2nd rate, Timber Buck. N Oak &
 Sugar Ash &c. N. of Spruce, Ash &c.

East On the True line between Sec. 20 & 29. T. N. H. N. 272nd Mm.
 21.01 To a Buck 10 in diam. in the line.
 41.32 Set the temp. 1st post at the corner east on the true line

Corner?

T. N. H. N. R. N. 272nd Mm. Ind.

from which a Buck 18 in diam. bears S 34 E. 15 links dist. so
 64.05 To a Buck 20 in diam. in the line
 82.05 To the post cor. of Sec. 20 21.28 & 29.

West On a Random line between Sec. 19. & 30. T. N. H. N. 272nd Mm.
 7.33 To a Buck 35 links wide, corner S. E.
 11.00 Set a temp. 1st post for the cor. of 1/4 Sec.
 79.78 Intersect the West Boundary 76 links S. of the post cor. of
 Sec. 24 & 25. T. N. H. N. 3. 4.
 Land Broken & 2nd rate. Timber. Sugar. Locust. Elm. Ash,
 Buck. &c. Undergrowth Spruce &c.

East On the True line between Sec. 19. & 30. T. N. H. N. 272nd Mm.
 15.70 To a Sugar 18 in diam. in the line
 39.89 Set the temp. 1st post for the cor. of 1/4 Sec. as the true line. from which an
 Ash 16 in diam. bears S 32 W. 9 links east; so,
 Coffey. 8 " " " N 45 W 25 " "
 57.63 To a Sugar 8 in diam. in the line.
 79.78 To the corner of Sec. 19.20.29 130.

North Return Sec 19 & 20 T. N. H. N. 272nd Mm.
 21.78 To a Buck 18 in diam. in the line.
 40.00 Set a 7th sec post from which,
 Sugar 8 in diam. bears N 34 W. 6 links east; so,
 Walnut, 12 " " " N 19 E. 11 " "
 42.50 To a Buck 20 links wide, corner S. E.
 57.50 " " 10. 10 " " " S. E.
 57.90 To an Elm. 14 in diam. in the line.
 80.00 Set apart for the corner of Sec. 19 & 20 from which,
 Buck 12 in diam. bears S 60 W 8 links east; so,
 Sugar, 14 " " " N 67 E. 10 " "
 Land Broken of 2nd rate, N. of Spruce & 2nd rate &

T11N

R2W



Office of the Monroe County Surveyor
Trohn Enright-Randolph

Health Services Building
119 West 7th Street
Bloomington, IN 47404
Phone: (812) 349-2570

Dear User,

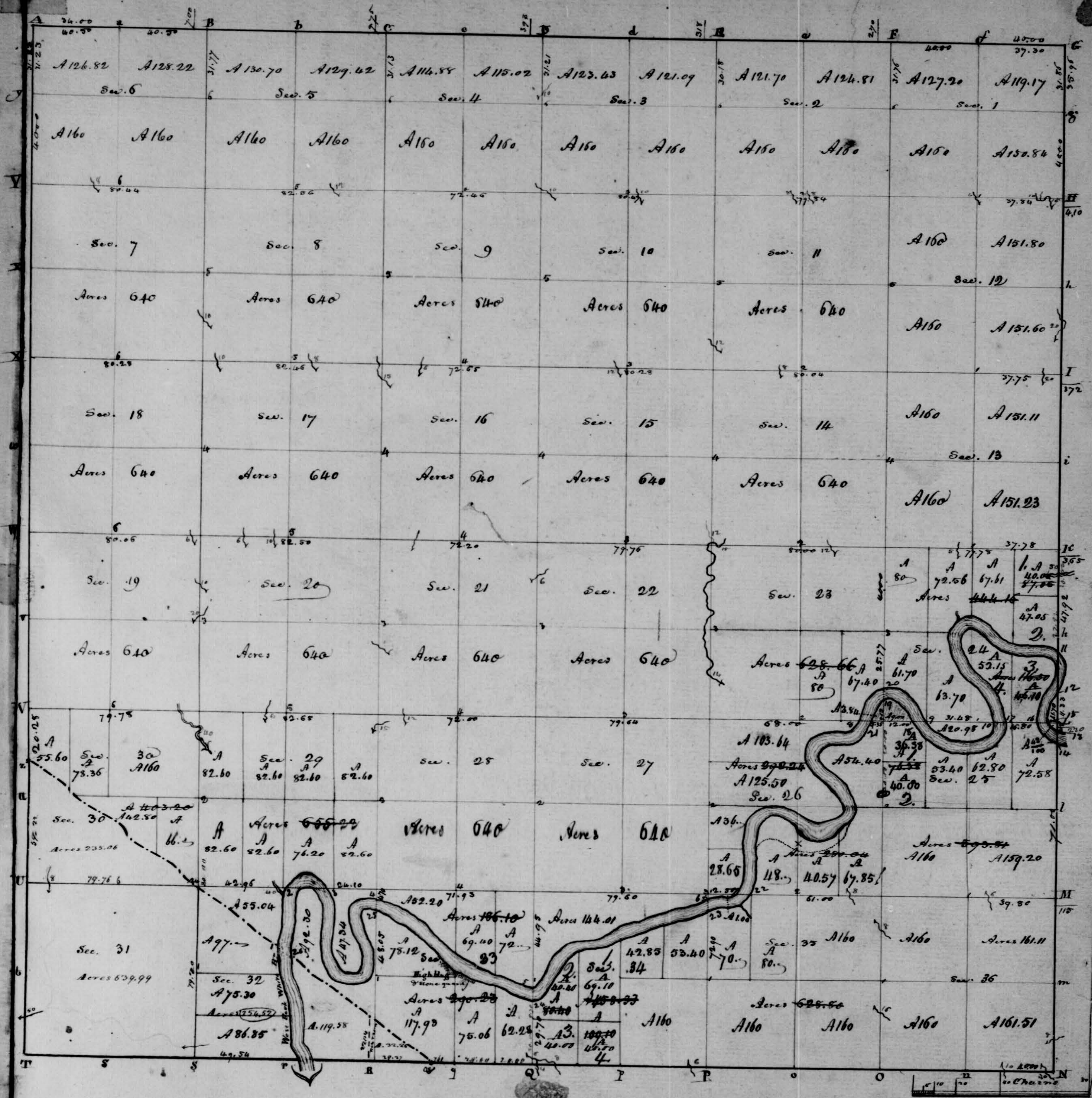
The following images were obtained in 2017 by the Office of the Monroe County Surveyor from the State Imaging and Microfilm Laboratory at the Indiana State Archives. The field notes and plats for Morgan County are stored on microfilm Reel 7534 at the Indiana State Archives. Each page provided by the State Imaging and Microfilm Laboratory is approximately 18MB. Our office combined the pages by Township & Range and reduced the resulting pdfs. This process may have caused some degradation in quality. We will provide unreduced images of specific pages if required. Please contact us at 812-349-2570 or at SurveyorsOffice@co.monroe.in.us to request a higher quality image of any specific page.

The pdfs are bookmarked with the original page numbers as assigned by the State Imaging and Microfilm Laboratory.

Be prepared to provide the county name, reel number, and the required page numbers when requesting full sized images.

If you would like a DVD of an entire county, please provide us with one DVD per county along with a self-addressed, stamped envelope.

Trohn Enright-Randolph
Monroe County Surveyor



Township No. 11 North, Range No. 11 West of the 2nd Meridian. Surveyed by Wm. Harris 1816 - J. Thos. Brown 1819.

Description of the Soil in the interior National lines.

| Section | Quality &c. | Section | Quality &c. | Section | Quality &c. |
|---------|---|---------|--|---------|--|
| 31.7.2 | 1st. rate. Sugar. Spice &c. | 33.3.4 | 1st. & 2nd. rate. Broken. Last & 1st. rate level | 2.8.3 | 2nd. rate. Soil |
| 30.3.1 | Same | 28.3.3 | 1st. rate level | 35.3.6 | 2nd. rate. Broken. Oak. Beech & Hickory |
| 29.3.0 | Same. 1st. level. 1st. rate. Broken. Sugar. Walnut. Hick. | 27.2.8 | 1st. 1st. & 1st. 2nd. rate level | 26.3.5 | 2nd. rate. Broken |
| 19.3.0 | 2nd. rate. Broken. Sugar. Beech. Oak. Walnut. Hick. | 21.1.25 | 2nd. 2nd. rate. Broken | 25.3.6 | 2nd. 2nd. rate. Same |
| 18.1.9 | Same | 21.2.2 | 1st. & 2nd. rate. Last & 2nd. rate. Broken | 23.2.0 | 1st. & 2nd. rate. Broken. Last & 2nd. rate level |
| 17.1.8 | Same | 16.2.1 | 2nd. 2nd. rate. Broken | 23.2.6 | 1st. rate level. Walnut. Hick. berry. Buckeye. Paw. pear |
| 16.1.8 | Same | 15.1.6 | Same. Oak. Beech. Sugar. Poplar &c. | 24.2.5 | 1st. & 2nd. rate |
| 15.1.8 | Same | 9.1.6 | Same | 23.2.4 | 1st. rate level |
| 14.1.8 | Same | 9.1.0 | Same | 14.2.3 | 1st. & 2nd. rate level |
| 13.1.6 | Same | 4.1.9 | Same | 13.2.4 | Same |
| 32.3.3 | 1st. rate level. Walnut. Hick. berry. Buckeye. Paw. pear | 3.1.4 | Same (1st. level) | 13.1.4 | 1st. & 2nd. rate level. Last & 2nd. rate. Broken |
| 29.3.2 | 2nd. rate. Broken | 24.3.5 | 1st. rate level. Walnut. Hick. berry. Buckeye. Paw. pear | 11.1.4 | 2nd. rate. Broken |
| 28.2.9 | 2nd. rate level | 27.3.4 | Same | 12.1.3 | 2nd. 2nd. rate. Broken |
| 20.2.9 | 2nd. rate. Broken | 26.2.4 | Same | 11.1.2 | Same |
| 20.2.1 | Same | 22.2.4 | Same | 2.1.1 | Same |
| 17.2.0 | Same | 22.2.3 | Same | 1.1.2 | Same |
| 16.1.7 | Same | 15.2.2 | 2nd. 2nd. rate. Broken. Oak. Hick. berry. Beech &c. | 1.1.2 | 2nd. rate. Broken |
| 8.1.7 | Same | 14.1.5 | 1st. & 2nd. rate. Broken. Last & 2nd. rate level | | |
| 8.1.9 | Same | 10.1.5 | 2nd. rate. Broken | | |
| 5.1.8 | Same | 10.1.1 | 2nd. 2nd. rate. Same | | |
| 4.1.5 | Same | 3.1.0 | Same | | |

South Boundary.

Most Quail run down line between Secs 18 & 36. T^s 10 11 12. NW

1 2 3 4 5 6 7 8 9 10 11 12 13 14 15 16 17 18 19 20 21 22 23 24 25 26 27 28 29 30 31 32 33 34 35 36 37 38 39 40 41 42 43 44 45 46 47 48 49 50 51 52 53 54 55 56 57 58 59 60 61 62 63 64 65 66 67 68 69 70 71 72 73 74 75 76 77 78 79 80 81 82 83 84 85 86 87 88 89 90 91 92 93 94 95 96 97 98 99 100 101 102 103 104 105 106 107 108 109 110 111 112 113 114 115 116 117 118 119 120 121 122 123 124 125 126 127 128 129 130 131 132 133 134 135 136 137 138 139 140 141 142 143 144 145 146 147 148 149 150 151 152 153 154 155 156 157 158 159 160 161 162 163 164 165 166 167 168 169 170 171 172 173 174 175 176 177 178 179 180 181 182 183 184 185 186 187 188 189 190 191 192 193 194 195 196 197 198 199 200 201 202 203 204 205 206 207 208 209 210 211 212 213 214 215 216 217 218 219 220 221 222 223 224 225 226 227 228 229 230 231 232 233 234 235 236 237 238 239 240 241 242 243 244 245 246 247 248 249 250 251 252 253 254 255 256 257 258 259 260 261 262 263 264 265 266 267 268 269 270 271 272 273 274 275 276 277 278 279 280 281 282 283 284 285 286 287 288 289 290 291 292 293 294 295 296 297 298 299 300 301 302 303 304 305 306 307 308 309 310 311 312 313 314 315 316 317 318 319 320 321 322 323 324 325 326 327 328 329 330 331 332 333 334 335 336 337 338 339 340 341 342 343 344 345 346 347 348 349 350 351 352 353 354 355 356 357 358 359 360 361 362 363 364 365 366 367 368 369 370 371 372 373 374 375 376 377 378 379 380 381 382 383 384 385 386 387 388 389 390 391 392 393 394 395 396 397 398 399 400 401 402 403 404 405 406 407 408 409 410 411 412 413 414 415 416 417 418 419 420 421 422 423 424 425 426 427 428 429 430 431 432 433 434 435 436 437 438 439 440 441 442 443 444 445 446 447 448 449 450 451 452 453 454 455 456 457 458 459 460 461 462 463 464 465 466 467 468 469 470 471 472 473 474 475 476 477 478 479 480 481 482 483 484 485 486 487 488 489 490 491 492 493 494 495 496 497 498 499 500 501 502 503 504 505 506 507 508 509 510 511 512 513 514 515 516 517 518 519 520 521 522 523 524 525 526 527 528 529 530 531 532 533 534 535 536 537 538 539 540 541 542 543 544 545 546 547 548 549 550 551 552 553 554 555 556 557 558 559 560 561 562 563 564 565 566 567 568 569 570 571 572 573 574 575 576 577 578 579 580 581 582 583 584 585 586 587 588 589 590 591 592 593 594 595 596 597 598 599 600 601 602 603 604 605 606 607 608 609 610 611 612 613 614 615 616 617 618 619 620 621 622 623 624 625 626 627 628 629 630 631 632 633 634 635 636 637 638 639 640 641 642 643 644 645 646 647 648 649 650 651 652 653 654 655 656 657 658 659 660 661 662 663 664 665 666 667 668 669 670 671 672 673 674 675 676 677 678 679 680 681 682 683 684 685 686 687 688 689 690 691 692 693 694 695 696 697 698 699 700 701 702 703 704 705 706 707 708 709 710 711 712 713 714 715 716 717 718 719 720 721 722 723 724 725 726 727 728 729 730 731 732 733 734 735 736 737 738 739 740 741 742 743 744 745 746 747 748 749 750 751 752 753 754 755 756 757 758 759 760 761 762 763 764 765 766 767 768 769 770 771 772 773 774 775 776 777 778 779 780 781 782 783 784 785 786 787 788 789 790 791 792 793 794 795 796 797 798 799 800 801 802 803 804 805 806 807 808 809 810 811 812 813 814 815 816 817 818 819 820 821 822 823 824 825 826 827 828 829 830 831 832 833 834 835 836 837 838 839 840 841 842 843 844 845 846 847 848 849 850 851 852 853 854 855 856 857 858 859 860 861 862 863 864 865 866 867 868 869 870 871 872 873 874 875 876 877 878 879 880 881 882 883 884 885 886 887 888 889 890 891 892 893 894 895 896 897 898 899 900 901 902 903 904 905 906 907 908 909 910 911 912 913 914 915 916 917 918 919 920 921 922 923 924 925 926 927 928 929 930 931 932 933 934 935 936 937 938 939 940 941 942 943 944 945 946 947 948 949 950 951 952 953 954 955 956 957 958 959 960 961 962 963 964 965 966 967 968 969 970 971 972 973 974 975 976 977 978 979 980 981 982 983 984 985 986 987 988 989 990 991 992 993 994 995 996 997 998 999 1000 1001 1002 1003 1004 1005 1006 1007 1008 1009 1010 1011 1012 1013 1014 1015 1016 1017 1018 1019 1020 1021 1022 1023 1024 1025 1026 1027 1028 1029 1030 1031 1032 1033 1034 1035 1036 1037 1038 1039 1040 1

3.00 To Abouak 30 bush mids, lemons & W.

22.50 To a Brook 10th, mid, leomen. A

40,00 Set a tempo $7\frac{1}{2}$ su post.

8000 " " " paid for the cr of aw. 35136.
Lands the same

Most On a Random line On the South Boston of Gen. J. S.
T. J. N. B. W.

40,000 Set a trap for 7th cupent.

8000 Set a trap for cap. pos. for the co. of ew. 34 & 35.
Gaucho cutting rich and good for farming
Timber Birch, Sugar, Poplar, Ash & Mahogany.

Saturday May 21. 1819

West On all an rms line On the South Branch of ca 34
J. H. A. R. D. W.

8,00 Trap Brook. 6 huts and, loc. N.W.

40.00 Let a temp. 17 $\frac{1}{2}$ en post.

40.00 Ten Brook 8 books milk, loc. N.M.

| | | | | | |
|-------|-----|-------|-----|-----|------|
| 79.00 | " " | Le. 4 | " " | " " | N.N. |
|-------|-----|-------|-----|-----|------|

80.00 Set a trap for first of the car of cow. 33 134
Lamb & East for same. Trap for rather Broken.
Lamb down, not sold.

West Quakam arm line On the South B. of L. 33.
J. H. R. 27.

40.00 Let. a tempo 7% au port.

47. To 1 Still 1185 lbs. G. of the old box on the N 3D of Harris's Purchase, between S.^s 1112.

T. N. N. R. N. 2nd 2nd Mm. Ind.

Sands similar East part Rath Brook.

- # East On the line betw South B. of L. 33.
T. N. N. R. N. 2nd 2nd Mm. Ind. 1.5.07.
- x 2.00 To spring Branch Co. N.E.
461. Set a post on the line from which
Beck 18 in dist. line. N 87 W 38 p. 160 dist. to
Do 18 " " S 24 W 26. " "
- 4761 Set the timber post on the line from the cor of L. 33 B. 34
from which Beck 6 in dist. line. N 65 W 19 the dist
under Do 10 " " N 46 E 29 p. 2.

- East On a line betw L. 34 & 35 S. 10 W. N. R. N. 2nd 2nd Mm. Ind.
- " " " " On the South B. of L. 34.
T. N. N. R. N. 2nd 2nd Mm. Ind.
- 40.00 Set the timber post on the line from which
Beck 24 in dist. line. S 36 W 33 the dist. to
Sugar 10 " " N 31 E 27. " "
- 80.00 Set the timber post at the on the line from which
Oak 30 in dist. line. N 74 W 16 the dist. to
Poplar 36 " " S 56 E 29. " "

- East On the line On the South B. of L. 35.
T. N. N. R. N. 2nd 2nd Mm. Ind.
- 8.00 To Rock 10 the mile, Co. N.W.
- 40.00 Set a post on the line from which
Beck 19 in dist. line. S 32 E 21 the dist. to
Do 8 " " N 70 W 18. " "
- 80.00 Set a post for the cor of L. 35 B. 36 On the line from
from which Beck 14 in dist. line. N 39 W 28 the dist
under Do 10 " " S 26 E 31. " "

- East On the line On the South B. of L. 36.

T. N. N. R. N. 2nd 2nd Mm. Ind.T. N. N. R. N. 2nd 2nd Mm. Ind.

- 40.00 Set the timber post at the line from which
18 in dist. line. N 85 W 19 the dist. to
Hickory 9 " " S 69 E 27. " "
- 80.00 Set a post on the Range 489 feet North of the timber
6 mile post and set a post for the cor of L.
1.6. 31 B. 36 S. 10 W. N. R. 15 W. from which
Beck 12 in dist. line. S 76 E 25 the dist. to
Do 12 " " S 39 W 55. " "
- Set by W. Harris 185.

- East From the cor of S. 10 W. N. R. 2nd 2nd Mm. Ind. On the
South B. of L. 31. T. N. N. R. N. 2nd 2nd Mm. Ind.
- 40.00 Set a post from which
Oak 20 in dist. line. S 62 E 21 the dist. to
Hickory 14 " " N 41 W 47. " "
- 80.00 Set a post for the cor of L. 31 B. 32 from which
Sugar 12 in dist. line. S 62 E 19 the dist. to
Maple 16 " " N 69 W 27. " "
- Sands in bottom.

- East On the South B. of L. 32 T. N. N. R. N. 2nd 2nd Mm. Ind.
- 40.00 Set a post from which
Oak 14 in dist. line. S 61 W 17 the dist. to
Oak 6 " " S 49 E 41. " "
- 49.54 To the Right Bank of N. River the River was
high over ran no farther.
Set by
William Harris.
Sept. 17 185.

- East On the South B. of L. 32 T. N. N. R. N. 2nd 2nd Mm. Ind.
- 40.00 To the old post
- 49.54 To the River at Lyeann. 18 in dist. cor.

T. N. N. R. N. 27th 2nd Mm. Ind.

80.00 Set apart for the con of ew. 32133.

East On the South Boundary of ew. 33. T. N. N. R. 27th.
 29.27 Set apart the Boundary line of Harris on Purchase
 on a set apart for the con of ew. 33. From which
 Buck 10 in dist. line. S61°W. 19 links north; to
 Co. 14 " " " N43°W. 32 " " "
 Land good for farming.

Surv. by
 William Harris.
 Dep't Sur.

East Boundary.

North On the East B^y of ew. 36. T. N. N. R. 27th. N. 60°30' E.
 13.00 To a Buck 10 links north, corner 2nd.
 40.00 Set a 1/4 report from which
 Hick 24 in dist. line. North 26 links north; to
 Buck. 18 " " " S58°W. 30 " "
 80.00 Set apart for the con of ew. 25136 from which
 W Oak. 12 in dist. line. S47°E. 9 links north; to
 Co. 30 " " " N34°E. 19 " "
 Land very broken & hilly. Rich soil. Some
 Buck, Sugar, Oak, & Hick.

North On the East Boundary of ew. 35. T. N. N. R. 27th.
 40.00 Set a 1/4 report from which
 W Oak. 12 in dist. line. S20°E. 29 links north; to
 Elm. 18 " " " S87°W. 24 " "
 71.00 Set apart on the Left Bank of White River for the
 con of ew. 23. From which
 W Oak. 30 in dist. line. N87°E. 3 links north; to
 Co. 5 " " " S55°W. 21 " "
 78.00 Set apart on the Right Bank of W River for the

T. N. N. R. N. 27th 2nd Mm. Ind.

con of ew. 25. From which
 Maple 9 in dist. line. S54°W. 9 links north; to
 93 Elder. Co. " " " S69°E. 18 " "
 80.00 Set apart for the con of ew. 24135 from which
 Spruce 10 in dist. line. S50°W. 15 links north; to
 Elm. 12 " " " N49°E. 24 " "
 This tract is now bottom & rather low land; overgrown.

North On the East B^y of ew. 24. T. N. N. R. 27th.
 11.33 To a maple on the Right Bank of W River for
 first corner
 32.08 To a Maple 12 in dist. of corner on the W B^y.
 of W for. con of ew. 24.
 40.00 Set a 1/4 report from which
 Buckeye 10 in dist. line. S53°E. 12 links north; to
 Co. 10 " " " S87°W. 20 " "
 67.50 To a Bayon 50 links on N. line W.
 80.00 Set apart for the con of ew. 93124 from which
 Hick 9 in dist. line. S38°E. 7 links north; to
 Co. 12 " " " N23°W. 31 " "
 Land same as last mile.

North On the East B^y of ew. 13. T. N. N. R. 27th.
 40.00 Set a 1/4 report from which
 Buck 15 in dist. line. N23°W. 19 links north; to
 Co. 8 " " " S58°E. 16 " "
 80.00 Set apart for the con of ew. 12813. from which
 Buck 18 in dist. line. S19°E. 13 links north; to
 W Oak. 24 " " " N23°W. 10 " "
 Land all bottom & rather wet, but fertile.

North On the East B^y of ew. 12. T. N. N. R. 27th.
 40.00 Set a 1/4 report from which

T. N. H. R. N. M. D. M. M. Ind. C.

West to middle of good farming land.

- East On the line On the S. B. of ev. 31.
T. 12 N. R. 27 W.
- 34.00 Set the temp. post on the line from which
W. Ash. 9 in dist. bears S 80 E of the north 13
Lea. 30 " " " S 40 W. 41 " "
- 74.00 Set the temp. post on the line from the end of ev. 31
from which, Buck 9 in dist. bears N 41 W 38 1/2 the dist
under a Lea. 18 " " " S 47 E. 25 " "
-
- East On the line On the South B. of ev. 32.
T. 12 N. R. 27 W.
- 40.00 Set a temp. post on the line from which
Buck 18 in dist. bears N 75 W. 14 the dist; 17
Lea. 18 " " " N 70 E. 20 " "
- 80.00 Set a post for the end of ev. 32 133 on the line
from which, Buck 14 in dist. bears S 60 E 27 the dist
under a B. Walnut 9 " " " N 20 W 53 " "
-
- East On the line On the S. B. of ev. 33.
T. 12 N. R. 27 W.
- 40.00 Set the temp. post on the line from which
Laga 24 in dist. bears N 29 W. 17 the dist; 17
Lea. 10 " " " S 35 E. 27 " "
- 80.00 Set the temp. post at the line from the end of ev. 33 134
from which, Buck 24 in dist. bears N 64 E. 12 the dist
under a B. Walnut. 12 " " " N 71 W 31 " "
-
- East On the line On the South B. of ev. 34
T. 12 N. R. 27 W.
- 40.00 Set the temp. post on the line from
which, Buck 24 in dist. bears N 81 W 22 the dist

T. N. H. R. N. M. D. M. M. Ind. C.

N. Walnut. 9 in dist. bears S 81 E. 39 the dist.
80.00 Set the temp. post on the line from which, (34 135)
from which, Buck 24 in dist. bears N 44 W 9 the
under a Buck 12 in dist. bears S 64 E. 16 the dist

- East On the line On the S. B. of ev. 35.
T. 12 N. R. 27 W.
- 40.00 Set the temp. post on the line from
which, Laga 12 in dist. bears S 5 E. 12 the dist
Buck 18 " " " N 65 E. 21 " "
- 80.00 Set a temp. post on the line from the end of ev.
35 136 from which
Buck 18 in dist. bears S 64 E. 28 the dist; 10
Lea. 18 " " " N 35 W 14 " "
-
- East On the line On the S. B. of ev. 36.
T. 12 N. R. 27 W.
- 40.00 Set the temp. post on the line from
which, Buck 10 in dist. bears S 70 W 21 the dist
under a Lea. 10 " " " S 70 W 21 " "
- 80.00 Set a post temp. for the end of T. 11 & 12 N. R. 27 W.
from which, Buck 18 in dist. bears N 66 E. 34
under a Lea. 30 " " " S 66 W. 21
Buck dist. Surveyed by
William Harris. 1881

- In East to N. H. West Boundary.
North On the East B. of ev. 36 T. 11 N. R. 37 W.
- 21.00 To a Brook. 50 mts. dist. Lea. 27 W
- 40.00 Set a post on the line
Hark 7 in dist. bears S 10 E. 31 the dist
Lea. 14 " " " S 49 W. 29 " "
- 80.00 Set a post for the end of ev. 36 136 from which
Walnut 20 in dist. bears S 39 W 20 the dist; 10

I. N. H. R. N. M. D. M. S. Ind. C.

West for muddling good farming (cont.)

- East On the line On the South D. B. of sec. 31.
T. 12 N. R. 27 W.
- 34.00 Set the temp. post on the line from which
W. Ash. 9 in dist. from. S 80 E 7 1/2 the dist; to
Loc. 30 " " " S 40 W. 41 " "
- 74.00 Set the temp. post on the line from the cor. of sec. 31/32
from which, Buck. 9 in dist. from. S 41 W. 38 1/2 the dist
and a Buck. 12 in dist. from. S 64 E. 14 1/2 the dist
-
- East On the line On the South D. B. of sec. 32.
T. 12 N. R. 27 W.
- 40.00 Set a temp. post on the line from which
Buck. 18 in dist. from. S 75 W. 14 1/2 the dist; to
Loc. 18 " " " S 70 E. 20 " "
- 80.00 Set a post for the cor. of sec. 32/33 on the line from
from which, Buck. 14 in dist. from. S 60 E. 27 1/2 the dist
and a Buck. 9 " " " S 20 W. 53 " "
-
- East On the line On the South D. B. of sec. 33.
T. 12 N. R. 27 W.
- 40.00 Set the temp. post on the line from which
Sugar. 24 in dist. from. S 29 W. 17 1/2 the dist; to
Loc. 10 " " " S 33 E. 27 " "
- 80.00 Set the temp. post at the line from the cor. of sec. 33/34
from which, Buck. 24 in dist. from. S 64 E. 12 1/2 the dist
and a Buck. 12 " " " S 71 W. 31 " "
-
- East On the line On the South D. B. of sec. 34.
T. 12 N. R. 27 W.
- 40.00 Set the temp. post on the line from
which, Buck. 24 in dist. from. S 81 W. 2 1/2 the dist

I. N. H. R. N. M. D. M. S. Ind. C.

93 W. about. 9 in dist. from. S 81 E. 39 the dist.
80.00 Set the temp. post on the line from which, (S 81 E. 39)
from which, Buck. 24 in dist. from. S 44 W. 9 1/2 the dist
and a Buck. 12 in dist. from. S 64 E. 14 1/2 the dist

- East On the line On the South D. B. of sec. 35.
T. 12 N. R. 27 W.
- 40.00 Set the temp. post on the line from
which, Sugar. 12 in dist. from. S 75 E. 12 1/2 the dist
Buck. 18 " " " S 65 E. 21 " "
- 80.00 Set a temp. post on the line from the cor. of sec.
35/36 from which
Buck. 18 in dist. from. S 64 E. 28 1/2 the dist; to
Loc. 18 " " " S 35 W. 14 " "
-
- East On the line On the South D. B. of sec. 36.
T. 12 N. R. 27 W.
- 40.00 Set the temp. post on the line from
which, Buck. 10 in dist. from. S 72 W. 21 1/2 the dist
and a Buck. 10 " " " S 72 W. 21 " "
- 80.00 Set a post for the cor. of T. 11 N. R. 27 W. 1/2
from which, Sugar. 18 in dist. from. S 66 E. 24
the dist; to Buck. 30 " " " S 61 W. 21
the dist. Surveyed by
William Harris. 1881

In East of T. 11 N. R. 27 W. West Boundary.

- North On the East D. B. of sec. 36. T. 11 N. R. 27 W.
- 21.00 To Brook. 50 in dist. from. Sec. 27
- 40.00 Set a post on the line from
Hickory 7 in dist. from. S 10 E. 31 the dist
to an Elm. 14 " " " S 49 W. 29 " "
- 80.00 Set a post for the cor. of sec. 25/36 from which
Walnut 20 in dist. from. S 39 W. 20 the dist; to

T. N. 11. S. R. 2. W. 2nd Mer. Ind.

W. Oak 30. in diam. bears S. 77. E. 1. links dist.
Land rich. Timber. Walnut. Buck. Sugar.

North On the East Boundary of Sec. 25 T. 11. S. R. 3. W.
40. 00 Set a post for the cor. of $\frac{1}{4}$ Sec. from which a
Sugar 14 in diam. bears S. 81. E. 40 links dist. & a
Sugar 16. " " " S. 86. W. 12. " "
59. 22 Intersect the Boundary line from which a
Buck 14 in diam. bears S. 34. W. 50 links dist. & a
No. 20. " " " S. 33. E. 30. " "
North On the East Boundary of Sec. 25 T. 11. S. R. 3. W.
20. 28 Made the cor. of Sec. 2 & 25 on a Sugar 14 in diam.
Land rich & good for farming.

North On the East Boundary of Sec. 24 T. 11. S. R. 3. W.
40. 00 Set a post for the cor. of $\frac{1}{4}$ Sec. from which a
Buck 6 in diam. bears S. 73. E. 14 links dist. & a
No. 30. " " " S. 85 W. 33. " "
80. 00 Set a post for the cor. of Sec. 13 & 24 from which a
Sugar 11 in diam. bears S. 73. E. 17 links dist. and a
No. 30. " " " S. 2. W. 34. " "
Land rolling & rich; Timber Sugar Buck. Ash
Walnut Elm. &c.

North On the East Boundary of Sec. 13 T. 11. S. R. 3. W.
14. 00 To a Buck 12 links wide; course S.
40. 00 Set a post for the cor. of $\frac{1}{4}$ Sec. from which a
Buck in diam. bears S. 12 E. 13 links dist. & a
No. 12. " " " S. 65 E. 46. " "
80. 00 Set a post cor. of Sec. 12 & 13 from which a
Buck 27 in diam. bears S. 21. E. 30 links dist. & a
No. 15. " " " S. 4 E. 30. " "
Land same as in the last mile.

T. N. 11. S. R. 2. W. 2nd Mer. Ind.

North On the East Boundary of Sec. 12 T. 11. S. R. 3. W.
40. 00 Set a post for the cor. of $\frac{1}{4}$ Sec. from which a
Sugar 27 in diam. bears S. 31. E. 11 links dist. & a
W. Walnut 8 in " " " S. 6. W. 5. " "
73. 50 To a Small Brook, course East
80. 00 Set a post for the cor. of Sec. 1 & 13 from which a
Buck 20 in diam. bears S. 10. W. 25 links dist. & a
No. 27. " " " S. 2 E. 18. " "
Land & Timber same as in the last mile.

North On the East Boundary of Sec. 1 T. 11. S. R. 3. W.
40. 00 Set a post for the cor. of $\frac{1}{4}$ Sec. from which a
Buck 24 in diam. bears S. 33. E. 23 links dist. & a
No. 24. " " " S. 54 W. 10. " "
71 23 To the cor. of Towns 11 & 12 S. Range 2 & 3 W.
Land & Timber same as in the last mile.
South of Boundary surveyed in 1811 by Alex. Holmes
North " " " 1819 by Wm. Harris

Subdivisions

North Between Sec. 35 & 36 T. 11. S. R. 2 W.
18. 84 To a Buck 28 in diam. in the line
24. 00 To a Buck 16 links wide; course N. N. W.
40. 00 Set a post for the cor. of $\frac{1}{4}$ Sec. from which a
Sagewood 3 in diam. bears S. 35 W. 11 links dist. & a
Buck 4. " " " S. 65 E. 11. " "
60. 00 To a W. Oak 18 in diam. in the line
63. 08 To a Buck 8 links wide; course S. W.
80. 00 Set a post for the cor. of Sec. 25 & 26 35 & 36 from which
a Buck 16 in diam. bears S. 30 E. 25 links dist. & a
No. 5. " " " S. 50 W. 5. " "
Land broken & 3rd rate. Timber W. Oak. B. Oak. Hickory
Buck No. Ug. Sugarwood. Ironwood. Sassafras. Am. &c.

T. N. 11. S. R. S. 2. W. 2nd Mer. Ind.

- East Between Sec. 25 & 36. T. 11. S. R. S. 2. W.
 23. 58 To a Buck 13 in diam. in the line
 40. 00 Set a post for the cor. of 1/4 Sec. from which a
 Buck 5 in diam. bears S 44 W. 5. links dist. & a
 No. 4. " " " S. 24 E. 25. " "
 49. 50 To a Brook 6 links wide. Course S. W.
 66. 06 To a Buck 22 in diam. in the line.
 79. 80 Intersect the East Boundary 115 links N. of the post
 cor. of Sec. as the post set for the cor. of Sec.
 30 & 31. T. 11. S. R. S. 1. W. & take the same bearing
 was. Land broken & 3rd rate. Timber Ash. W. Oak
 B. Oak. Hickory &c. Undergrowth Spice. Ash. &c.
-
- North Between Sec. 25 & 26. T. 11. S. R. S. 2. W.
 9. 90 To a Spring Branch. Course N. E. W.
 24. 84 To a Sugar 16 in diam. in the line.
 40. 00 Set a post for the cor. of 1/4 Sec. from which a
 Sugar 5 in diam. bears S 80 W. 12 links dist. & a
 Hornbeam 5. " " " S. 22 E. 19. " "
 45. 70 To a Pond 80 links wide. Course N. E.
 63. 94 To a Buckeye 6 in diam. in the line.
 80. 00 Set a post for the cor. of Sec. 23. 24. 25 & 26. from
 which a Box Elder 6 in diam. bears S 9 E. 12 links dist.
 and a Hackberry 5. " " " S. 42 W. 23. " "
 Land on this mile broken & 3rd rate on the last
 1/2 mile & 2nd rate. Timber. W. Oak. Hickory. Ash.
 Walnut. Black. Cherry. Buckeye &c. U. g. Sugar &
 Hickory. Birch. Poplar. &c.
-
- East Between Sec. 24 & 25. T. 11. S. R. S. 2. W.
 12. 00 Set a Post in the Left Bank of White River cor. to
 fractional Sec. 24 & 25. from which a
 Red Bud 12 in diam. bears S 59 E. 32 links dist.

Comp?

T. N. 11. S. R. S. 2. W. 2nd Mer. Ind.

- and a Buckeye 14 in diam. bears S 45 W. 50 links dist.
 17. 66 Set a post on the right Bank of W. River cor. to fractional
 Sec. 24 & 25. from which a
 Maple 4 in diam. bears S 29 E. 18 links dist. & a
 Cottonwood 16 in " " " S. 53 W. 14. " "
 40. 00 Set a post for the cor. of 1/4 Sec. from which a
 Walnut 15 in diam. bears S 21 E. 16 links dist. & a
 Sycamore 44. " " " S. 67 W. 20. " "
 49. 14 Set a post on the right Bank of White River for the cor.
 of fractional Sec. 24 & 25. from which a
 Sycamore 18 in diam. bears S. 24 W. 7 links dist. & a
 Maple 14. " " " S. 8 W. 12. " "
 53. 74 Set a post on the left Bank of White River cor. of
 fractional Sec. 24 & 25. from which a
 Hackberry 18 in diam. bears S 41 E. 28 links dist.
 and a Locust 20. " " " S. 8 E. 48. " "
 70. 54 Set a post on the left Bank of White River cor. of
 fractional Sec. 24 & 25. from which a
 Hackberry 35 in diam. bears S. 20 W. 26 links dist. & a
 Box Elder 13. " " " S. 27 W. 37. " "
 75. 20 Set a post on the right Bank of White for the cor.
 of fractional Sec. 24 & 25. from which a
 Maple 5 in diam. bears S. 61 E. 7 links dist. & a
 No. 7. " " " S. 55 W. 7. " "
 77. 74 Intersect the East Boundary 220 links N. of the
 post cor. of Sec. 24 & 25. from which an E
 Elm 5 in diam. bears S. 70 W. 9 links dist. & a
 Hackberry 6 in " " " S. 82 E. 21. " "
 Land on this mile part 1st rate & part 2nd rate
 Timber. Walnut. Sycamore. Hackberry. Buck. &c.
 Undergrowth Spice. Poplar. &c.

North Between Sec. 23 & 24. T. 11. S. R. S. 2. W.

T. N. N. R. N. D. W. D. M. Ind.

- 9.15 Set a post on the Left Bank of White River for the
co of Grad. Sec 23 124 from which
Cottonwood 3 in dia has N52 E 12 the dist; on
Do. 3 " " N11 W 13 " "
- 14.23 Set a post on the Right Bank of White River for
the co of Grad. Sec 23 124 from which
Elm. 3 in dia has N5 E 24 the dist & a
Burch 24 " " N34 W 18 " "
- 40.00 Set a 74 cu post from which
Hackberry 14 in dia has N55 W 2 the dist; on
Do. 4 " " N45 E 7 " "
- 68.70 To a Sugar. 14 in dia in the line.
- 80.00 Set a post for the co of sec 23 124 from which
an Elm. 6 in dia has S22 E 5 the dist; on
Hackberry 4 " " N12 W 14 " "
- Sand bed and 1st rate; Timber Walnut, Hack-
berry Buckeye Ash, & N. Y. Spruce & Pawpaw.

- East Between Sec 13 124 T. N. N. R. D. W. D. M. Ind.
- 25.95 To an Elm. 12 in dia in the line
- 33.64 To a Beech 5 links mds, Co. I
- 40.00 Set a 74 cu post from which
Beech 15 in dia has S46 E 14 the dist; on
Do. 18 " " N7 W 23 " "
- 66.50 To an Ash 18 in dia in the line.
- 77.78 Enter out the East 13 124 365 links North of the post
co of sec 24 123. Set a post for the co of sec 13 124
from which
Maple 10 in dia has N41 W 10 links dist to
Hick. 1 23 " " S66 W 8 " "
- Sand bed 1st & 2nd rate; Timber Walnut,
Ash, Sugar, Elm, Beech, W Oak, & N. Y. Spruce
& Pawpaw.

T. N. N. R. N. D. W. D. M. Ind.

- North Between Sec 13 124 T. N. N. R. D. W. D. M. Ind.
- 22.53 To a Cherry 16 in dia in the line.
- 40.00 Set a 74 cu post from which
Hick 7 3 in dia has N63 W 11 links dist; on
Beech 21 " " S69 E 29 " "
- 64.00 To ad. B. Hick 17 in dia in the line
- 80.00 Set a post for the co of sec 11 12 13 124 from which
a Maple 14 in dia has N19 W 15 the dist to
Engg. 16 " " S40 E 37 " "
- Sand bed 1st rate; Timber Walnut, Sugar & Cherry
Hackberry Oak, & Hick. Beech, & C. N. Y.
Spruce, Pawpaw, Sassafras, Logwood &c.
Nov 29. 1819.

- East Between Sec 12 123 T. N. N. R. D. W. D. M. Ind.
- 24.34 To a Beech 30 in dia in the line.
- 40.00 Set a 74 cu post from which
Sp. Oak 10 in dia has N55 E 12 the dist; on
W. Oak 14 " " S53 E 28 " "
- 55.50 To a Beech 17 in dia in the line.
- 68.50 " " Beech 15 links mds, Co. I
- 77.75 Enter out the East 13 124 372 links N of the post co
of sec 12 123. Set a post for the co of sec 12 123
from which
Sycamore 36 in dia has S48 W 19 links dist to
Beech 18 " " N40 W 27 " "
- Sand bed 1st rate; Timber Walnut, Sugar & Cherry
Hackberry Oak, & Hick. Beech, & C. N. Y.
Spruce, Pawpaw, Sassafras, Logwood &c.

- North Between Sec 11 123 T. N. N. R. D. W. D. M. Ind.
- 22.45 To a Beech 17 in dia in the line.

T. N. 11. S. R. 2. M. 2nd Mer. Sect.

North East to S. E.

20. 56 To the same Stream Course S. E.
 40. 00 Set a post for the cor. of 1/4 Sec. from which a
 Hackberry 17. in diam. bears S. 20. E. 11. links dist. &c.
 " 14. " " " S. 62. W. 28. " "
 45. 00 To the same Stream Course S. W.
 48. 44 " " " " " S. E.
 65. 00 " " " " " S. W.
 66. 44 " " " " " S. E.
 70. 40 " " " " " S. S. W. Nov. 25th. 1819.
 76. 68 " " " " " S. E.
 80. 00 Set a post for the cor. of Sec. 14. 15. 22. & 23 from which
 a B. Walnut 6. in diam. bears S. 21. E. 29. links dist. &c.
 Butternut 7. " " " S. 86. W. 19. " "
 Land level & 1st rate; Timber, Walnut, Hackberry,
 Buckeye, Sugar, &c. Undergrowth, Spice, Pampas.

- West On a Random line between Sec. 14. & 23. T. 11. S. R. 2. W.
 27. 36 To a Brook 12 links wide; Course S. E.
 40. 00 Set the tempst post for the cor. of 1/4 Sec.
 77. 16 To a Brook 15 links wide; Course S. S. E.
 78. 00 " " Same " " " S. E.
 80. 00 Intersect the S. & E. line 29 links South of the post
 cor. of Sec. 14. 15. 22. & 23.
 Land level & first rate; Timber, Walnut, Hackberry,
 Buckeye, Sugar, Buck, Oak, &c. U. g. Spice Pampas, &c.

- East On the True line between Sec. 14. & 23. T. 11. S. R. 2. W.
 19. 73 To a M. Oak 12. in diam. in the line.
 40. 00 Set the tempst post for the cor. of 1/4 Sec. at the aver. dist. on the
 true line from which a
 Sugar 27. in diam. bears S. 78. E. 13. links dist. and a
 Buck 14. " " " S. 17. W. 23. " "

T. N. 11. S. R. 2. M. 2nd Mer. Sect.

56. 00 To a B. Walnut 66 in diam. in the line
 80. 00 To the post cor. of Sec. 13. 14. 23. & 24.

- North Between Sec. 14. & 15. T. 11. S. R. 2. W.
 45 To a Brook 15 links wide; Course S. S. W.
 2. 50 " " " " " S. S. E.
 20. 29 To a Sassafras 12. in diam. in the line.
 40. 00 Set a post for the cor. of 1/4 Sec. from which a
 Hickory 4. in diam. bears S. 60. W. 13. links dist. &c.
 Buck 8. " " " S. 65. E. 14. " "
 64. 42 To a Buck 19. in diam. in the line
 80. 00 Set a post for the cor. of Sec. 10. 11. 14. & 15. from which a
 Sugar 17. in diam. bears S. 75. W. 15. links dist. &c.
 Buck 18. " " " S. 70. E. 27. " "
 Land on the 1st 1/4 mile is broken & 3rd rate. 2nd 1/4 level
 and 2nd rate. Timber, M. Oak, B. Oak, Buck, Sugar,
 Poplar, Hickory, &c. U. g. Spice, Sogwood, Ironwood & Birch.

- West On a Random line between Sec. 11. & 14. T. 11. S. R. 2. W.
 40. 00 Set the tempst post for the cor. of 1/4 Sec.
 52. 54 To a Brook 8 links wide; Course S. S. W.
 80. 04 Intersect the East & West line 64 links S. of the post
 cor. of Sec. 10. 11. 14. & 15.
 Land Broken & 3rd rate. Timber, M. Oak, Buck,
 Hickory, Poplar, &c. U. g. Sogwood, Ironwood & Birch.

- East On the True line between Sec. 11. & 14. T. 11. S. R. 2. W.
 20. 54 To a Buck 17. in diam. in the line
 40. 02 Set the post for the cor. of 1/4 Sec. at the aver. dist. on the
 true line from which a
 Buck 16. in diam. bears S. 44. E. 11. links dist. and a
 Sogwood 5. in " " S. 43. E. 25. " "
 60. 27 To a Poplar 33. in diam. in the line.

T. N. N. R. N. 2nd M. Ind.

80.00 In the post co. of Dec. 11. 12. 13 & 14

North Between Dec. 10. & 11. T. N. N. R. 2nd M.

7.58 To a Brook 12 links wide; Course S.E.

26.10 To a Oak 20 in dia. in the river.

40.00 Set a 7th eu post from which

Sassafras 5 in dia. bears N 77° 19' W 1/2 S dist; to

Logwood 6 " " S 76° 10' " "

53.28 To a Beech 19 in dia. in the river.

80.00 Set a post for the co. of Dec. 2. 3. 10 & 11 from which

Beech 26 in dia. bears N 81° 01' W 1/2 S dist; to

No 7 " " S 63° 11' 25' "

Land post lost and post broken 2nd 13th rate

Timber N Oak, B Oak, Beech, Poplar, Hickory

Sugar, &c. N 9° Spin Sassafras Birch &c.

West On all Indian line between Dec. 2nd 11 T. N. N. R. 2nd M.

37.50 To a Brook 8 links wide, Course S.E.

40.00 Set a temporary 7th eu post

45.37 To a Brook 8 links wide, Course S.E.

79.84 Intercept the N.S. line 68 links South of the post co. of Dec. 2. 3. 10 & 11.

Land post lost & post broken 2nd 13th rate;

Timber Beech, Sugar, N Oak, Black, Hickory &c.

N 9° Spin Logwood, Sassafras, Hickory Birch &c.

East On the true line between Dec. 2nd 11 T. N. N. R. 2nd M.

15.84 To a S. 93. Hickory 20 in dia. in the river.

39.92 Set the temporary eu post at the co. dist. on the true line

from which, N Oak 6 in dia. bears N 62° 11' 5' W 1/2 S dist;

and a Sassafras 14 " " S 64° 11' 14' "

61.69 To a Black 36 in dia. in the river.

79.84 To the post co. of Dec. 1. 2. 11 & 12.

T. N. N. R. N. 2nd M. Ind.North Between Dec. 2nd 13 T. N. N. R. 2nd M.

24.64 To a Poplar 14 in dia. in the river.

40.00 Set a 7th eu post from which

Beech 18 in dia. bears N 64° 11' 14' W 1/2 S dist; to

Sugar. 20 " " S 78° 0' 29' "

64.35 To the Ash. 32 in dia. in the river.

70.18 Intercept the N. Boundary 318 links East of the

post co. of Dec. 34 & 35. T. N. N. R. 2nd M. & set a post forthe " " 2nd 13 from which

Beech 10 in dia. bears S 63° 11' 23' W 1/2 S dist; to

No. 19 " " S 28° 0' 19' "

Land post and 2nd rate; Timber Poplar, Oak, &c.

N 9° Spin, &c. Nov. 26. 1819.

North Between Dec. 33 & 34 T. N. N. R. 2nd M.

3.06 To a Brook 6 links wide, Co. N.W.

20.87 " an Ash. 14 in dia. in the river.

29.70 Set a post on the Left Bank of N. River for the

co. of Dec. 33 & 34 from which

Poplar 12 in dia. bears S 61° 11' 3' W 1/2 S dist; to

Red Bud 4 " " S 29° 0' 9' "

35.03 Set a post on the Right Bank of N. River for

the co. of Dec. 33 & 34 from which

Oycamore 16 in dia. bears N 61° 11' 11' W 1/2 S dist; to

Mulberry 6 " " N 35° 0' 21' "

40.00 Set a new post from which

Hackberry 26 in dia. bears N 43° 11' 10' W 1/2 S dist; to

Sugar. 14 " " S 19° 0' 8' "

58.12 To a Locust 24 in dia. in the river.

80.00 Set a post for the co. of Dec. 27. 28. 33 & 34 from which

Hackberry 16 in dia. bears N 17° 0' 27' W 1/2 S dist; to

Hickory 12 " " S 21° 11' 25' "

Land post & mile broken 3rd rate; Timber Black, &c.

I. N^o 11. N. R. N^o 27. 2nd M^o Ind.

Beck, Nicky &c. Last 7 mile level 1st rate;
 Timber Walnut, Hackberry, Sugar, Buckeye, Nicky
 &c. W^g Spruce, Hickory, Pawpaw &c. &c.

West On a Random line between Sur. 27. 1834 I. N. R. 27.
 40.00 Set a temporary post.
 79.60 Intersect the N. 15 line 15 miles North of the first cor.
 of Sur. 27. 28. 33. 1834.
 Second level 1st rate; Timber Walnut, Hackberry, Sugar,
 Buckeye &c. W^g Spruce & Pawpaw.

East On the true line between Sur. 27. 1834 I. N. R. 27.
 26.05 To a Hackberry 14 in dia. in the line.
 39.80 Set the temporary post at the av. dist. on the true line
 from which a Buckeye 13 in dia. bears S 28 N 4 W dist. 14
 and a Hackberry 14 " " " N 1 E 15 " "
 57.75 To a Hackberry 22 in dia. in the line.
 79.60 To the cor. of Sur. 26. 29. 34. 1835.

North Between Sur. 27. 1828 I. N. R. 27.
 20.97 To a Beck. 16 in dia. in the line.
 40.00 Set a temporary post from which a
 North line 4 in dia. bears N 65 W 13 miles dist. &c.
 Beck. 18 " " " N 42 E 18 " "
 68.18 To a Hackberry 24 in dia. in the line.
 80.00 Set a post for the cor. of Sur. 21. 22. 27. 1828 from which
 Nicky 16 in dia. bears N 10 W 10 miles dist. &c.
 Maple 18 " " " S 7 E 12 " "
 Second level 1st & 2nd rate; Timber Beck,
 Sugar, Oak Walnut, Elm, Maple, Hackberry &
 W^g Spruce, Pawpaw and Prinos &c.

West On a Random line between Sur. 22. 1827 I. N. R. 27.

I. N^o 11. N. R. N^o 27. 2nd M^o Ind.

40.00 Set a temporary post.
 79.64 Intersect the N. 15 line at the first cor. of Sur. 21. 22. 27.
 & 28. Second level 1st rate; Timber 13477. Walnut,
 Beck, Ash, Cherry, Locust &c. W^g Spruce, Hickory.

East On the true line between Sur. 22. 1827 I. N. R. 27.
 21.50 To a Cherry 24 in dia. in the line.
 39.82 Set a temporary post at the av. dist. on the true line from
 which a Walnut 3 in dia. bears N 49 W 21. 18 miles dist. &c.
 Sugar 25 " " " S 47 E 29 " "
 57.54 To a Sugar 6 in dia. in the line.
 79.64 To the first cor. of Sur. 22. 23. 26. 1827.

North Between Sur. 21. 1822 I. N. R. 27.
 30.60 To a Walnut 14 in dia. in the line.
 40.00 Set a temporary post from which a
 Beck 18 in dia. bears N 49 W 11 miles dist. &c.
 W Oak 16 " " " S 35 E 26 " "
 63.65 To a Brook 8 miles wide, corner S. W.
 64.80 To a Nick 16 in dia. in the line.
 80.00 Set a post for the cor. of Sur. 15. 16. 21. 1822 from which
 Nick 10 in dia. bears N 23 W 7 miles dist. &c.
 Beck 14 " " " S 8 E 15 " "
 Second level 1st mile level 1st rate; 2nd 1/2 mile broken.
 3rd rate; Timber Walnut, Hackberry, Sugar, Beck,
 W Oak, Nick &c. W^g Spruce, Maple, Logwood
 Prinos &c.

West Between Sur. 15. 1822 I. N. R. 27. On a Random
 0.210 To a Brook 12 miles wide. Co.
 40.00 Set a temporary post.
 79.76 Intersect the N. 15 line 27 miles North of the first cor.
 of Sur. 15. 16. 21. 1822.

T. N. 11. N. R. N. 2nd Mer. Ind.

Land Broken 2nd & 3rd rate; Timber W Oak, Black
Nick 8 Beech, W Dogwood, Sassafras, Summ.
Brins. &c.

- East On the True line between Sec. 15 & 22 T. 11. N. R. 2nd Mer.
74.72 To a Nick 20 in diam. in the line.
39.88 Set a post for the cor. at the ar. dist. on the true line from
which an Ironwood 4 in. diam. bears S. 12 E. 24 links dist. &c.
and an W Oak 14 " " " N. 63 W. 46 " "
59.74 To a Nick 16 in diam. in the line.
79.76 To the cor. of sec. 14, 15, 22 & 23.

- North Between Sec. 15 & 16 T. 11. N. R. 2nd Mer.
19.70 To an. Sp Oak. 29 in diam. in the line.
40.00 Set a post for the cor. from which
Dogwood 3 in diam. in the line. S. 80 W. 70 links dist. &c.
Beech. 3 " " " N. 59 E. 8 " "
61.68 To a Nick 26 in diam. in the line.
80.00 Set a post for the cor. of sec. 9, 10, 15 & 16. from which
Beech 4 in diam. bears S. 17 E. 19 links dist. &c.
Sugar. 5 " " " N. 17 W. 14 " "
Land broken 2nd & 3rd rate; Timber W Oak, Beech,
Sugar, Poplar &c. W Spruce, Dogwood, Ironwood
Brins &c.

- West On a Random line between Sec. 10 & 15 T. 11. N. R. 2nd Mer.
40.00 Set a post for the cor.
46.70 To a Brook 12 links wide. Course S. S. E.
80.28 Intersect the N. S. line 15 links North of the post cor.
of Sec. 9, 10, 15 & 16.
Land broken 1st rate; Timber W Oak, Beech, Black,
Nick &c. W Spruce, Dogwood, Brins &c.

T. N. 11. N. R. N. 2nd Mer. Ind.

- East On the True line between Sec. 10 & 15 T. 11. N. R. 2nd Mer.
22.61 To a Buck 12 in diam. in the line
40.14 Set a post for the cor. of 1/4 Sec. at the ar. dist. on the true
line from which a Buck 13 in diam. bears S. 16 W. 24 links dist. &c.
Sugar. 17 " " " N. 11 E. 24 " "
57.60 To a Sugar. 16 in diam. in the line
80.28 To the post cor. of Sec. 10, 11, 14 & 15.

- North Between Sec. 9 & 10 T. 11. N. R. 2nd Mer.
22.15 To a Buck 18 in diam. in the line
40.00 Set a post for the cor. of 1/4 Sec. from which a
Wickery 15 in diam. bears N. 54 W. 21 links dist. &c.
Buck 6 " " " S. 69 E. 13 " "
66.08 To a Sugar. 10 in diam. in the line
80.00 Set a post for the cor. of Sec. 3, 4, 9 & 10. from which a
Sugar. 15 in diam. bears S. 22 E. 25 links dist. &c.
So. 20 " " " S. 27 W. 28 " "
Land broken. 1st & 2nd rate. Timber: Beech,
W Oak, Wickery, Sp. Oak, Sugar, &c. Wg. Ironwood,
Dogwood, Sassafras, Spruce, Brins, &c.

- West On a Random line between Sec. 3 & 10 T. 11. N. R. 2nd Mer.
35.05 To a Brook 10 links wide; Course S. S. E.
40.00 At the temp. post for the cor. of 1/4 Sec.
76.82 To a Brook 10 links wide. Course S. S. E.
80.47 Intersect the S. & L. line 8 links North of the post cor.
of Sec. 3, 4, 9 & 10. T. 11. N. R. 2nd Mer.
Long. post level. 1st & 2nd rate. 1 post Broken 1st & 3rd rate,
Timber Beech, Poplar, Sugar, W Oak, &c. Wg. Spruce
Ironwood, Maple, Dogwood, & Brins.

- East On the True line between Sec. 3 & 10 T. 11. N. R. 2nd Mer.
20.57 To a Buck 21 in diam. in the line

T. N. H. N. R. N. D. M. D. M. Ind.

- 20.29 To a Hick 16 in dia. in the line.
40.00 Set a 7/8 in post from which,
Bech. 14 in dia. has N 13 E. 18 W. dist. 12,
Ho. 16 " " " S 17 W. 30 " "
66.50 To a Red Oak 30 in dia. in the line.
72.06 To a Brook 15 limbs mid, corner N. 9 W.
80.00 Set a post for the cor of sec. 20. 21. 28 & 29 from which,
Hick 13 in dia. has S 16 N. 11 W. dist. 12,
Ash. 18 " " " N 34 E. 14 " "
Sand bent ends 2nd rate; Timber N Oak, R. Oak,
Bech. Sugar, Ash, &c. N 7 Spr. Maple, &c.
-
- West On a Random line between Sec. 21 & 28 T. N. H. R. D. M.
40.00 Set a 7/8 in post
69.70 To a Brook. 13 limbs mid, corner S. 2 W.
72.00 Intersect the West 131 or N 18 line 16 limbs South
of the post cor of sec. 20. 21. 28 & 29.
Sand part bent ends part broken 2nd & 3rd rate
Timber N Oak, Ash, Bech. Walnut, Hick &c.
N 7 Spr. Ash, Maple, Beech &c.
-
- East On the true line between Sec. 21 & 28. T. N. H. R. D. M.
25.50 To a Bech. 16 in dia. in the line.
36.00 Set the 7/8 in post at the cor dist. in the true line
from which, Sugar, 14 in dia. has S 15 E. 15 W. dist.
and a Bech. 17 " " " N 13 E. 21 " "
55.45 To a Hick 16 in dia. in the line
72.00 To the cor of sec. 20 21. 28 & 29.
-
- North Between Sec. 20 & 21. T. N. H. R. D. M.
23.65 To an Elm 20 in dia. in the line.
59.00 To a Brook 3 limbs mid, corner S. E.
40.00 Set a 7/8 in post from which,

T. N. H. N. R. N. D. M. D. M. Ind. 417

- Sugar. 20 in dia. has N 59 W. 5 limbs dist. 12,
Ho. 14 " " " S 16 E. 10 " "
60.14 To a Sugar. 24 in dia. in the line.
80.00 Set a post for the cor of sec. 16. 17. 20 & 21 from which,
Sugar. 16 in dia. has S 12 W. 14 limbs dist. 12,
Ho. 20 " " " N 68 E. 16 " "
Intersect Brook & 2nd rate; Timber Bech. Sugar,
Ash, Walnut, &c. N 7 Spr. &c.
-
- West On a Random line between Sec. 16 & 21. T. N. H. R. D. M.
40.00 Set a 7/8 in post
62.15 To a Brook 10 limbs mid, corner S. 2 W.
72.20 Intersect the N 13 line 15 limbs North of the post
cor of sec. 16. 17. 20 & 21.
Sand broken 2nd & 3rd rate; Timber Bech. N Oak,
Hick, Walnut, &c. N 7 Spr. Maple, Sassafras, Ho & B
Sourwood, &c. Nov. 23. 1879.
-
- East On the true line between Sec. 16 & 21. T. N. H. R. D. M.
17.80 To a Walnut. 12 in dia. in the line.
36.10 Set the 7/8 in post at the cor dist. in the true line
from which, Bech. 18 in dia. has S 17 W. 14 limbs dist.
and a Ho. 14 " " " N 33 W. 23 " "
49.56 To a Bech. 20 in dia. in the line.
72.20 To the cor of sec. 15 16. 21 & 22.
-
- North Between Sec. 16 & 21. T. N. H. R. D. M.
19.48 To a Sugar. 20 in dia. in the line.
40.00 Set a 7/8 in post from which,
Bech. 22 in dia. has N 31 W. 28 limbs dist. 12,
Ho. 30 " " " S 67 E. 16 " "
61.55 To a Walnut. 14 in dia. in the line.
71.00 To a Brook. 15 limbs mid, corner S. E.

I. N. H. N. R. N. 277 2nd Mm. Ind.

- 20.29 To a Hickory 16 in dia. in the line.
 40.00 Set a 7th 2nd post from which,
 Beach. 14 in dia. beam N 13 E. 18 lbs ash, 12,
 Ho. 16 " " " 15 7 30 " "
 66.50 To a Red Oak 20 in dia. in the line.
 72.06 To a Brook 15 limbs mid, corner N 3 W
 80.00 Set a post in the cor of sec. 20. 21. 28 129 from which,
 Hickory 13 in dia. beam S 26 N. 11 lbs ash, 12,
 ash. 18 " " " N 34 E. 14 " "
 Sand line ends 2nd rate; Timber N Oak, R. Oak,
 Beach, Sugar, Ash, &c. N 7 Spin, Maple, &c.
-
- West On a Random line between Sec 21 & 28 T. 11. N. R. 27.
 40.00 Set a 7th 2nd post
 69.70 To a Brook. 12 limbs mid, corner S. S. W.
 72.00 Intersect the West 720 or N 18 line 16 limbs south
 of the post cor of sec 20. 21. 28 129
 Sand part line ends part broken 2nd & 3rd rate
 Timber N Oak, Ash, Beach, Walnut, Hickory &c.
 N 7 Spin, Ash, Maple, Bruns &c.
-
- East On the line between Sec 21 & 28. T. 11. N. R. 27.
 25.50 To a Beach. 10 in dia. in the line.
 36.00 Set the 7th 2nd post at the cor dist in the line
 from which, Sugar, 4 in dia. beam S 25 E. 5 lbs ash,
 and a Beach, 17 " " " N 13 E. 21 " "
 53.45 To a Hickory 16 in dia. in the line
 72.00 To the cor of sec 22 21. 28 129
-
- North Return Sec 20 & 21. T. 11. N. R. 27.
 23.65 To an Elm 20 in dia. in the line.
 29.00 To a Brook 5 limbs mid, corner S. E.
 40.00 Set a 7th 2nd post from which,

I. N. H. N. R. N. 277 2nd Mm. Ind.

- Sugar. 20 in dia. beam N 59 W. 5 limbs ash; 12,
 Ho. 14 " " " S 16 E. 10 " "
 60.14 To a Sugar. 24 in dia. in the line.
 80.00 Set a post for the cor of sec 16. 17. 20 121 from which,
 Sugar. 16 in dia. beam S 12 W. 14 limbs ash; 12,
 Ho. 20 " " " N 68 E. 16 " "
 Sand broken 2nd rate; Timber Beach, Sugar,
 Ash, Walnut, &c. N 7 Spin, &c.
-
- West On a Random line between Sec 16 & 21 T. 11. N. R. 27.
 40.00 Set a 7th 2nd post
 62.15 To a Brook 10 limbs mid, corner S. S. W.
 72.20 Intersect the N 18 line 15 limbs North of the post.
 cor of sec 16 17. 20 & 21.
 Sand broken 2nd & 3rd rate; Timber Beach, N Oak,
 Hickory Walnut, &c. N 7 Spin, Maple, Sassafras, Hophorn,
 Ironwood, &c. Nov. 23. 1877.
-
- East On the line between Sec 16 & 21 T. 11. N. R. 27.
 17.80 To a Walnut. 12 in dia. in the line.
 36.10 Set the 7th 2nd post at the cor dist in the line
 from which, Beach 18 in dia. beam S 81 W. 14 lbs ash,
 and a Ho. 14 " " " N 33 W. 23 " "
 49.56 To a Beach 20 in dia. in the line.
 72.20 To the cor of sec 15 16. 21 120
-
- North Return Sec 16 & 21 T. 11. N. R. 27.
 19.48 To a Sugar. 20 in dia. in the line.
 40.00 Set a 7th 2nd post from which,
 Beach, 22 in dia. beam N 31 W. 28 lbs ash; 12,
 Ho. 30 " " " S 67 E. 16 " "
 61.85 To a Walnut. 14 in dia. in the line.
 71.00 To a Brook. 15 limbs mid, corner S. E.

T. N. H. N. R. N. 2nd 2nd. Ind.

- Asht. 4 in diam. bears S 44 E. 17 links dist;
 58.43 Set a post on the Right Bank of N River for the cor of
 Grad Sec. 29 130 from which
 Walnut 20 in diam. bears S 33 E. 41 links dist; so,
 10. 20 " " " N 61 W 42. "
 82.58 To the corner 29 30 31 130.

- North Return Sec 29 130 T. N. H. N. 2nd.
 19.06 To a Buck 18 in diam. in the line.
 20.00 Set a 70 lb post from which
 Elm. 5 in diam. bears N 69 W. 13 links dist; so,
 Ash 14 " " " N 72 E. 16 " "
 60.54 To a Buck 17 in diam. in the line.
 64.75 To a Buck 11 links wide, Co. Sec.
 69.00 Cut a Bend of River Stream.
 80.00 Set a post for the corner 19 20 29 130 from which,
 Buck 14 in diam. bears N 20 E. 35 links dist; so,
 Elm. 30 " " " S 80 W 26 " "
 Sound part but also part broken 2nd rate land
 Timber Sugar Walnut, Buck, Sugar, Ash, &c.
 W. Spruce, &c.

- West On a Random line between Sec. 20 & 29 T. N. H. N. 2nd.
 40.00 Set a temporary post.
 51.54 To a Buck 6 links wide, Co. Sec.
 82.65 Taken out the N 13 line 10 links North of the post cor
 of Sec. 19 20 29 130.
 Sound Broken & 2nd rate; Timber Buck, N Oak &
 Sugar W. Spruce, Ash &c.

- East On a True line between Sec. 20 & 29 T. N. H. N. 2nd.
 21.01 To a Buck 11 in diam. in the line.
 41.32 Set the temporary post at the corner on the true line

Census?

T. N. H. N. R. N. 2nd 2nd. Ind.

- from which a Buck 18 in diam. bears S 34 E. 15 links dist; so
 64.05 To a Buck 20 in diam. in the line
 82.05 To the first cor. of Sec. 20 21 28 & 29.

- West On a Random line between Sec. 19 & 30 T. N. H. N. 2nd.
 7.33 To a Buck 35 links wide, course S E
 11.00 Set a temporary post for the cor. of 1/4 Sec.
 79.78 Intersect the West Boundary 76 links S. of the post cor of
 Sec. 24 & 25 T. N. H. N. 3rd.
 Land Broken & 2nd rate. Timber Sugar Locust Elm, Ash,
 Buck, &c. Undergrowth Spruce &c.

- East On the True line between Sec. 19 & 30 T. N. H. N. 2nd.
 15.70 To a Sugar 18 in diam. in the line
 39.89 Set the temporary post for the cor. of 1/4 Sec. at the true dist. on
 the true line. from which an
 Ash 16 in diam. bears S 32 W. 9 links dist; so,
 Coffey 8 " " " N 45 W 25 " "
 57.63 To a Sugar 8 in diam. in the line.
 79.78 To the corner of Sec. 19 20 29 130.

- North Return Sec 19 20 T. N. H. N. 2nd.
 21.78 To a Buck 18 in diam. in the line.
 40.00 Set a 70 lb post from which,
 Sugar 8 in diam. bears N 34 W. 6 links dist; so,
 Walnut. 12 " " " N 19 E. 11 " "
 42.50 To a Buck 20 links wide, corner S. W.
 57.50 " " 10 " " " S. E.
 57.90 To an Elm. 14 in diam. in the line.
 80.00 Set a post for the corner 17 18 19 20 from which,
 Buck 12 in diam. bears N 60 W 8 links dist; so,
 Sugar. 14 " " " N 67 E. 10 " "
 Sound Broken & 2nd rate; W. Spruce & 13 links &

J. N. H. N. R. N. 277 2nd Mr. Sud.

West Return Sat. 17 820 J. N. H. N. R. 277. On a Random
 40.00 Set a trap for the first
 47.27 To a Brook 16 miles mid., Course S.
 60.47 To a Brook 6 miles mid., Course S.E.
 82.50 Entered the N 15 line 14 miles mid. South of the
 Post on of Sat. 17 18 19 20.
 Lando Broken 2nd rate; Timber Walnut, Sugar,
 Ash, &c. N.Y. Spruce.

East On the same line between Sat. 17 820 J. N. H. N. R. 277.
 19.80 To a Brook 24 in dist. in the line.
 41.25 Set the trap for the first at the ar. dist. on the line from
 from which, Brook 22 in dist. from. 248 E 29 W dist.
 and a No. 20 " " " 228 E 12 " "
 54.17 To a Lagoon 14 in dist. in the line.
 82.50 To the cr. of Sat. 16 17 20 821.

West On a Random line between Sat. 18 819 J. N. H. N. R. 277.
 5.75 To a Brook 6 miles mid., Course S.E.
 40.00 Set a trap for the first.
 80.56 Entered the West Boundary 16 miles South of the Post,
 cr. of Sat. 13 824. J. N. H. N. R. 377 and set a Post for
 " " " 18 19 20
 Lando Broken 2nd rate; Timber Birch, Sugar,
 Walnut, Elm, &c. N.Y. Spruce, &c.

East On the same line between Sat. 18 819 J. N. H. N. R. 277.
 21.06 To a Poplar 56 in dist. in the line.
 40.63 Set the trap for the first at the ar. dist. on the line from
 from which, Walnut 10 in dist. from. N 36 E 90 W dist.
 and a Birch 6 " " " 238 E 15 " "
 60.91 To an Elm 10 in dist. in the line.
 82.06 To the cr. of Sat. 17 18 19 20.

J. N. H. N. R. N. 277 2nd Mr. Sud.

North Return Sat. 17 818 J. N. H. N. R. 277.
 20.32 To a Brook 22 in dist. in the line.
 40.00 Set a trap for the first from which,
 Brook 6 in dist. from. N 16 W 14 miles dist.; on
 No. 14 " " " 284 E 18 " "
 66.05 To a Lagoon 24 in dist. in the line.
 80.00 Set a post for the cr. of Sat. 7 8 17 18. from which,
 Lagoon 10 in dist. from. N 43 W 28 the dist.; S " "
 Brook 20 " " " 25 E 45 " "
 Lando Broken 2nd rate.

West On a Random line between Sat. 8 817 J. N. H. N. R. 277.
 3.64 To a Brook 15 miles mid., Course S.E.
 30.68 " " " No. 8 " " " 2 E.
 40.00 Set a trap for the first.
 76.00 To a Brook 10 miles mid., Course S.E.
 82.46 Entered the N 15 line 19 miles South of the Post on
 of Sat. 7 8 17 18.
 Lando Broken 2nd rate; Timber Sugar, Ash,
 Poplar, Birch, &c. N.Y. Spruce, &c.

East On the same line between Sat. 8 817 J. N. H. N. R. 277.
 22.54 To a Lagoon 21 in dist. in the line.
 41.23 Set the trap for the first at the ar. dist. on the line from
 from which, Poplar 15 in dist. from. N 6 W 11 the dist.
 and an Elm 5 " " " 289 E 10 " "
 60.56 To an Spruce Oak 20 in dist. in the line.
 82.46 To the cr. of Sat. 8 9 16 817.

West On a Random line between Sat. 18 817 J. N. H. N. R. 277.
 40.00 Set a trap for the first.
 80.28 Entered the West Boundary 9 miles South of the
 Post on of Sat. 12 13 J. N. H. N. R. 377.

T. N. H. N. R. N. 277 Dnd. Mr. Ind.

Land Broken & 2nd rate. Timber Sugar. Buck
Ash, Walnut. G. N. S. Spruce, Pawpan. G.

~~East On the line between Sec 15 & 17 T. 11. N. R. 277.
21.06 To a Poplar 36 in dia. in the line.
40.03 Set the temp. post at the ar. cut on the line from which
a Walnut 10 in dia. bears N 63 E. 10 lbs. ash, G.,
Hick 6 " " 35 "~~

East On the line between Sec 14 & 15 T. 11. N. R. 277.
24.16 To a Poplar 7 in dia. in the line.
40.14 Set the temp. post at the ar. cut on the line from
which, Buck 12 in dia. bears N 14 N. 15 lbs. ash, G.,
" 19 " " S 7 E 17 " "
64.56 To a Sugar 20 in dia. in the line.
80.28 To the corner of sec. 17 & 18. Nov. 19. 1819.

North Return Sec 15 T. 11. N. R. 277.
15.05 To a Buck 10 lbs. m. G. S. E.
20.44 To a Sugar 26 in dia. in the line.
40.00 Set a post from which
Buck 23 in dia. bears N 30 E. 14 lbs. ash, G.,
" 16 " " N 67 N. 17 " "
53.11 To a Hackberry 25 in dia. in the line.
80.00 Set a post for the cor. of sec. 15 & 17 from which,
Buck 20 in dia. bears N 58 E. 17 lbs. ash, G.,
Sugar 30 " " N 67 N. 54 " "
Land Broken & 2nd rate; Timber Sugar Walnut, Hack
berry. Ash Buck, G. N. S. Spruce, Ash, Poplar G.

West On a random line between Sec 5 & 15 T. 11. N. R. 277.
22.00 To a Buck 12 lbs. m. G. S. E.
40.00 Set a temp. post.

T. N. H. N. R. N. 277 Dnd. Mr. Ind.

82.56 Set a post on the N. B. line 8 m. South of the post cor. of
Sec. 5 & 15. Land Broken & 2nd rate; Timber Ash,
Sugar Buck & Elm, Walnut, G. N. S. Spruce, Ash, Paw
pan. G.

East On the line between Sec 5 & 8 T. 11. N. R. 277.
19.06 To a Buck 28 in dia. in the line.
41.28 Set the temp. post at the ar. cut on the line from
which, Buck 32 in dia. bears N 43 E. 13 lbs. ash,
G., Hick 15 " " N 27 N. 11 " "
59.94 To a Buck 18 in dia. in the line.
82.56 To the cor. of sec. 14 & 15. 80.9.

West On a random line between Sec 6 & 7 T. 11. N. R. 277.
40.00 Set a temp. post.
51.80 To a Buck 8 m. m. G. S. E.
80.44 Set a post on the West Bound. 186 m. South of the post.
cor. of sec. 11 & 12 T. 11. N. R. 377
Land Broken & 2nd rate; Timber Buck, Poplar,
Ash, Sugar. G. N. S. Spruce.

East On the line between Sec 6 & 7 T. 11. N. R. 277.
16.97 To a Buck 20 in dia. in the line.
40.22 Set the temp. post at the ar. cut on the line from
which, Buck 18 in dia. bears N 17 N. 28 lbs. ash,
G. " 20 " " N 47 N. 14 " "
62.69 To a Buck 26 in dia. in the line.
80.44 To the cor. of sec. 5 & 6. 78.8.

North Return Sec 5 & 6 T. 11. N. R. 277.
22.82 To a Sugar 18 in dia. in the line.
40.00 Set a post from which,
Sugar 10 in dia. bears N 55 E. 15 lbs. ash, G.,

T.N. H.A.R. N. 27. 2nd Mr. Ind.

Beck 28 in dist. from S10743 timber creek;
 56.00 To a Lagoon. 19 in dist. in the river.
 11.77 Intersect the N. Boundary 7000 ft East of the post.
 on of sec 3133 T. 12 N. R. 27 W and set a post for
 the corner of a 5th. from which;
 Beck 20 in dist. from West 32 timber creek & c
 10.21 " " S52 E. 61 " "
 Lead Broken & 2nd rate; Timber Beck, Ash,
 Hickory, N. Y. Spruce, &c.

Meanders of the Right Bank of White River
 Commencing on the East B.Y. of sec. 25. T. 11. N. R. 27 W
 thence

N35W 5.00 To the line between Sec. 24 & 25. E. 20 East
 of the post corner of sec. 23, 24, 25 & 26. mouth of River
 11.75 timber thence.

N6 E. 3.80

N19 E 6.00 Intersect the Range line For the mouth of
 River creek; from the corner see notes on the
 Standard line.

Commencing on the Range line. East B.Y. of sec 24
 thence in Sec. 24.

N55W 6.50.

N84W 4.00

S62W 5.00

N79W 8.10

N54W 5.00

In Sec 24

N31W 10.00

N62W 4.50

N84W 8.50

S55W 5.00

To the mouth of a Brook 15 Ws. side, from
 N.W.

T.N. H.A.R. N. 27. 2nd Mr. Ind.

S27W 6.00

S7W 4.00

S17 E. 3.00

S11 E. 6.50

S28 E. 6.00

S39 E. 8.50

S51 E. 8.00

S45 E. 5.00

S18 E. 5.83

To the line between Sec. 24 & 25; 49, 14 East of
 the post corner of sec. 23, 24, 25 & 26. mouth of River. 4.60.

S77W 7.00

S53W 4.50

S45W 4.50

In Sec. 25.

S89W 4.00

N65W 9.00

N57W 7.50

N48W 11.36

To the line between Sec. 24 & 25; 17.66 East
 of the post corner of sec. 23, 24, 25 & 26. mouth of River.

N30W 6.00

N26W 7.00

N67W 5.50

In Sec. 24

N87W 6.62

To the line between Sec. 23 & 24; 14.23 North of the
 post corner of sec. 23, 24, 25 & 26. mouth of River. 5.08.

S75W 4.00

S47W 5.00

In Sec. 23.

S32W 4.00

S17W 6.50

To the line between Sec. 23 & 24; 10.89 West of the
 post corner of sec. 23, 24, 25 & 26. mouth of River. 5.54

S45W 8.50.

I. N. H. A. R. A. 2nd M. 2nd M. Ind.

A89 N 9.00
 S66 N 7.50
 S29 N 5.00
 S4 N 4.50
 S29 E 6.00
 S48 E 4.50
 S55 E 4.50
 S57 E 5.00
 S39 E 6.50
 S1 E 3.50
 S49 N 8.50
 S61 N 9.00
 A64 N 5.00
 A34 N 8.50
 A61 N 7.00
 A84 N 4.50
 S69 N 5.00
 S44 N 5.00
 S26 N 5.00
 S14 N 4.00
 S25 N 4.00
 S9 N 7.50
 S11 E 6.00
 S9 N 4.50
 S28 N 2.50

In L. 26.

To the line between Sec. 26 & 35. 67.34' N. of
 the post on of Sec. 25, 26, 35 & 36. width R. 7.34
 Nov. 30. 1817

West 6.00
 S70 N 4.50
 S36 N 3.50

To the line between Sec. 34 & 35. 46.50' N. of
 the post on of Sec. 34 & 35. width of River 3.90

I. N. H. A. R. A. 2nd M. 2nd M. Ind.

S70 N 8.50
 S82 N 6.00
 S74 N 5.00
 S71 N 6.00
 S75 N 4.50
 S71 N 6.50
 S62 N 20.00
 S73 N 10.50
 S46 N 11.00
 S30 N 10.00
 S41 N 3.50
 S54 N 367

To the line between Sec. 33 & 34. 35.03' N. of the
 post on of Sec. 33 & 34. width of River 5.32

A57 N 8.50
 A68 N 6.50
 A75 N 7.00
 A68 N 13.00
 A60 N 13.00
 A50 N 10.00
 A38 N 13.50
 A55 N 7.50
 A79 N 5.78

To the line between Sec. 33 & 32. 75.30' N. of
 the post on of Sec. 32 & 33 (75.30)
 width of River 4.21 the creek

A80 N 5.00
 S61 N 6.00
 S30 N 5.00
 S10 N 9.50
 S16 E 4.50
 S3 E 3.00
 S25 E 4.00

I. N. H. A. R. A. No 277 2nd Mer. Ind.

S31 E. 4.00
 S57 N 3.00
 S43 N 2.00
 S76 N 3.00
 N72 N 5.00
 N33 N 5.00
 N87 N 9.00
 N5 E. 9.00
 N13 E. 7.00
 N13 N 3.50
 N21 N 4.50

To the line between Sec 29 & 32 24.10 West
of the post on of sec 29 & 32 width of Riv. 4.95

N38 N 4.00
 S74 N 6.00
 S80 N 6.50
 S39 N 4.80

To the line between Sec 29 & 32 40.62 West
of the corner of sec 28 & 29 32 & 33. W. R. 6.62

S34 N 4.00
 S24 N 5.00
 S4 N 11.50
 S13 N 4.50

S22 N 280 To the N.E. Boundary of Harrison's Purchase

Commenced in the South Boundary of sec. 32. Then
A. 27 N down up stream in Sec. 32.

N41 N 5.18.
 N30 N 6.27
 N24 N 8.89
 N14 N 5.36.
 N3 N. 6.29
 N10 N 9.44.

I. N. H. A. R. A. No 277 2nd Mer. Ind.

N14 N 1.98.
 N3 E. 6.61

N26 E. 6.09 To the N.E. Boundary of Harrison's Purchase.

Meadows of the Left Bank of White River
Commencing in the N.E. Boundary of Harrison's
Purchase in Sec. 32 thence up stream.

N14 E. 15.00
 N14 E. 9.00
 N27 E. 7.00
 N70 E. 2.54.

To the line of Sec 29 & 32 34.00 West of the
corner of sec 28 & 29 32 & 33

East. 4.50
 S22 E. 3.50
 South 7.00
 S11 N 7.00
 S2 N. 9.00
 S11 E. 9.00
 S23 E. 9.50
 S34 E. 6.50
 N80 E. 7.50
 N38 E. 6.50
 N14 E. 7.50
 N17 N 15.50
 N4 N 6.00
 N50 E. 4.00
 N70 E. 3.70

To the line between Sec 32 & 33 70.09 N. of
the post on of sec 32 & 33.

S73 E. 4.50
 S36 E. 7.00

I. N. H. R. R. 2nd M. Ind.

149 E. 8.00
 155 E. 12.00
 147 E. 8.00
 161 E. 13.50 High Bluff & good stone quarry.
 144 E. 1.50
 184 E. 5.00
 169 E. 5.50
 166 E. 11.00
 150 E. 3.50 To the line of sec. 33 & 34 29 70. N of sec. cor.

East 0.75. To a Brook 10 links n.e., Co. D.C.

131 E. 2.50

174 E. 5.00

130 E. 4.50

119 E. 9.00

148 E. 7.00

177 E. 12.00

166 E. 4.00

139 E. 6.50

170 E. 11.00

181 E. 7.00

187 E. 7.00

167 E. 8.50

158 E. 9.00

154 E. 3.50 To the line between Sec. 34 & 35. 72.90. North of the cor. of sec. 34 & 35.

172 E. 6.00

179 E. 4.00

173 E. 5.00

189 E. 6.50 To a Brook 10 links n.e., Co. A.W.

161 E. 2.50

100 E. 2.08 To the line between Sec. 26 & 25. 61. ch. W. of

I. N. H. R. R. 2nd M. Ind.

in to sec. 25, 26 & 36. Dec 2. 1819

117 E. 5.00

187 E. 12.00

171 E. 9.00

132 E. 5.00

118 E. 6.50

168 E. 3.50

121 E. 7.50

154 E. 7.00

188 E. 6.50

160 E. 6.00

143 E. 4.00

164 E. 7.50

135 E. 2.50

128 E. 10.00

113 N. 2.50

139 N. 3.50

159 N. 15.00

142 N. 4.00

125 N. 5.00

115 E. 4.50

172 E. 2.00

187 E. 7.00

161 E. 7.00

140 E. 8.00

113 N. 4.31 To the line between Sec. 23 & 26; 5.05. West of the post cor. of sec. 23, 24, 25 & 26.

128 E. 6.00

139 E. 6.00 To the line between Sec. 23 & 24. 9.15 North of the cor. of sec. 23, 24, 25 & 26.

I. N. H. A. R. N. D. M. D. M. M. Sud.

| | | |
|--------|-------|--|
| 449 E. | 8.00 | |
| 455 E. | 12.00 | |
| 447 E. | 8.00 | |
| 461 E. | 13.50 | High Bluff & good stone quarry. |
| 477 E. | 1.50 | |
| 484 E. | 5.00 | |
| 469 E. | 5.50 | |
| 466 E. | 11.00 | |
| 450 E. | 3.30 | To the line of sec. 33 & 34 29th St of the Co. |
| East | 0.75 | To a Brook 10 miles out, Co. D.C. |
| 431 E. | 2.50 | |
| 474 E. | 5.00 | |
| 430 E. | 4.50 | |
| 419 E. | 9.00 | |
| 445 E. | 7.00 | |
| 477 E. | 12.00 | |
| 466 E. | 4.00 | |
| 459 E. | 6.50 | |
| 470 E. | 11.00 | |
| 481 E. | 7.00 | |
| 487 E. | 7.00 | |
| 467 E. | 5.50 | |
| 458 E. | 9.00 | |
| 454 E. | 3.50 | To the line between Sec. 24 & 25, 72.90 North of the center of sec. 24 & 25. |
| 472 E. | 6.00 | |
| 479 E. | 4.00 | |
| 472 E. | 3.00 | |
| 489 E. | 6.50 | To a Brook 10 miles out, Co. A.W. |
| 451 E. | 2.50 | |
| 450 E. | 2.08 | To the line between Sec. 26 & 25, 61.40 W. of |

I. N. H. A. R. N. D. M. D. M. M. Sud. 435

a to Sec. 25, 26, 35 & 36. Co. 2. 1819

| | | |
|--------|-------|---|
| 417 E. | 5.00 | |
| 487 E. | 12.00 | |
| 471 E. | 9.00 | |
| 432 E. | 5.00 | |
| 418 E. | 6.50 | |
| 468 E. | 3.50 | |
| 421 E. | 7.50 | |
| 454 E. | 7.00 | |
| 488 E. | 6.50 | |
| 460 E. | 6.00 | |
| 443 E. | 4.00 | |
| 464 E. | 7.50 | |
| 435 E. | 2.50 | |
| 428 E. | 10.00 | |
| 413 E. | 2.50 | |
| 439 E. | 3.50 | |
| 459 E. | 15.00 | |
| 442 E. | 4.00 | |
| 425 E. | 5.00 | |
| 415 E. | 4.50 | |
| 472 E. | 2.00 | |
| 487 E. | 7.00 | |
| 464 E. | 7.00 | |
| 440 E. | 8.00 | |
| 413 E. | 4.31 | To the line between Sec. 23 & 26, 5.35 West of the center of sec. 23, 24, 25 & 26. |
| 428 E. | 6.00 | |
| 439 E. | 5.00 | To the line between Sec. 23 & 24, 9.15 North of the center of sec. 23, 24, 25 & 26. |

S. N. H. N. R. No. 27. 2nd Mer. Ind.

S 84 E. 4.50
 S 60 E. 3.50
 S 32 E. 8.00 To the line between Sec. 24 & 25. 12 ch. East
 of the corner of Sec. 23, 24, 25 & 26

S 39 E. 6.00
 S 48 E. 6.50
 S 60 E. 5.00
 S 64 E. 9.00
 S 79 E. 8.00
 N 71 E. 8.00
 N 42 E. 6.00
 N 19 E. 6.50
 N 21 39.

To the line between Sec. 24 & 25 753.74 E of the
 corner of Sec. 23, 24, 25 & 26.

N 27 3.00
 N 23 N 6.00
 N 45 N 18.50
 N 29 N 4.50
 N 23 N 7.50
 N 8 N 5.00
 N 25 E. 5.00
 N 61 E. 4.00
 S 63 E. 3.50
 S 38 E. 8.50
 S 51 E. 5.50
 S 67 E. 8.59
 S 88 E. 12.90
 S 58 E. 5.00
 S 20 E. 4.50
 S 7 N 4.00
 S 19 N 3.00

S. N. H. N. R. No. 27. 2nd Mer. Ind.

S 24 N. 5.00
 S 28 N. 4.50
 S 10 N. 3.50
 South 1.60 Intersect the line between Sec. 24 & 25. 75.54th
 East of the corner of Sec. 23, 24, 25 & 26.

S 15 E. 7.50
 S 53 E. 5.00
 S 69 E. 1.65 Intersect the Range line on the East of Sec. 25.

The part of this Township lying in Harrison's Purchase
 was surveyed by
 December 3, 1819 William Harris, L.S.

The part lying North of Harrison's Purchase was
 surveyed by Mr. Brown
 Sept 1st 1819.

I certify that the foregoing Transcript of the field
 notes of Township N. H. North of Range N. 27
 of the 2nd Principal Meridian has been compared
 and with the original notes in this Office &
 found to be correct.

Surveyor General's Office
 Cincinnati, Nov. 20 1841

Sur. General.

T. N. H. N. R. N. 2nd Mer. Ind.

S84 E. 4.50

S60 E. 3.50

S32 E. 8.00 To the line between Sec. 24 & 25. 12 ch. East
of the corner of Sec. 23, 24, 25 & 26

S39 E. 6.00

S48 E. 6.50

S60 E. 5.00

S64 E. 9.00

S79 E. 8.00

N71 E. 8.00

N42 E. 6.00

N19 E. 6.50

N27 E. 3.95 To the line between Sec. 24 & 25. 753, 74 E of the
corner of Sec. 23, 24, 25 & 26.

N27 E. 3.00

N23 E. 6.00

N45 E. 18.50

N29 E. 4.50

N23 E. 7.50

N8 E. 5.00

N25 E. 5.00

N61 E. 4.00

S63 E. 3.50

S38 E. 8.50

S51 E. 5.50

S67 E. 8.59

S88 E. 12.90

S58 E. 5.00

S20 E. 4.50

S7 E. 4.00

S19 E. 3.60

T. N. H. N. R. N. 2nd Mer. Ind.

S24 E. 3.00

S28 E. 4.50

S40 E. 3.50

South 1.60 Intersect the line between Sec. 24 & 25. 78.54th
East of the corner of Sec. 23, 24, 25 & 26.

S15 E. 7.50

S33 E. 5.00

S69 E. 1.65 Intersect the Range line on the East 137 of Sec. 25.

The part of this Township lying in Harris's Purchase
was surveyed by
December 3, 1819 William Harris, Lt.

The part lying North of Harris's Purchase was
surveyed by Thos. Brown
Sept 1819

I certify that the foregoing Transcript of the field
notes of Township N. H. North of Range N. 2nd
of the 2nd Principal Meridian has been compared
and with the original notes in this office I
found to be correct.

Surveyor General's Office
Cincinnati Nov 26 1841

Sur. General.